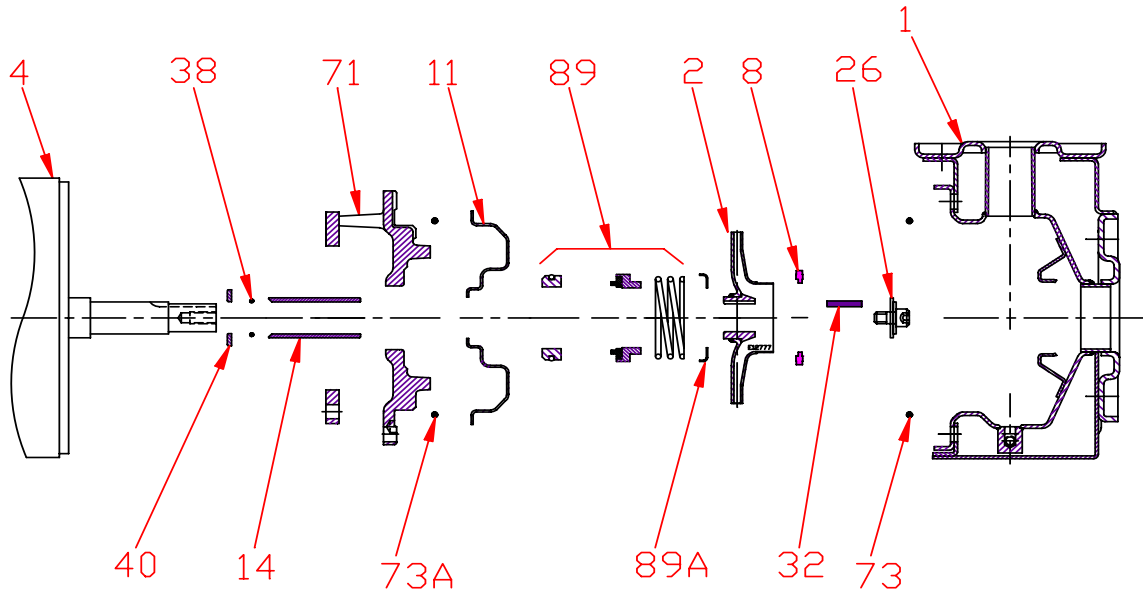


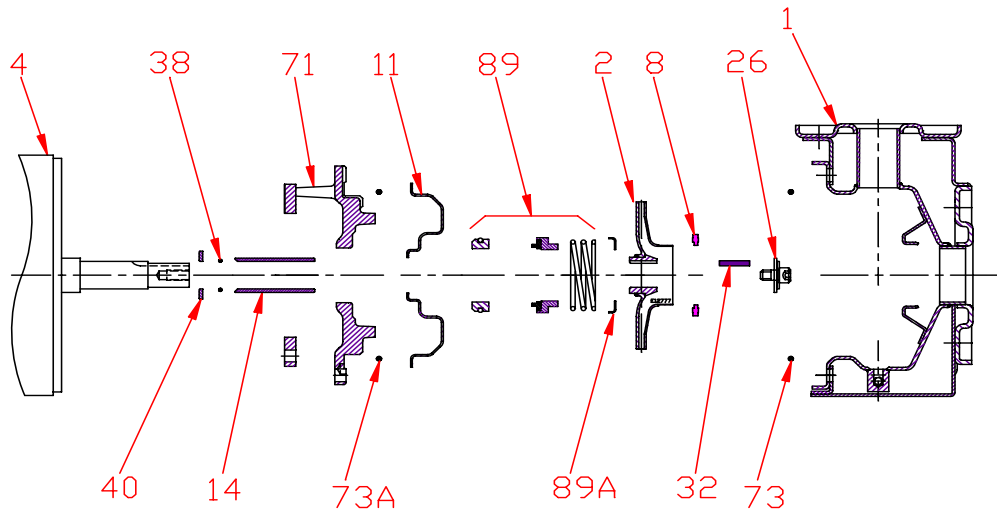
Pump 326 • 304SS • JM Frame • 1750 RPM



| KEY NO. | PART NAME | PUMP 326 |
|---------|--|--------------|
| 1 | CASE, 304SS, 2.5 x 2, FLG | 137.002.978 |
| 2 | IMPELLER, STAINLESS, ENCLOSED, 7/8" KEYED: | |
| | 4.57" DIA | 137.002.971 |
| | 4.96" DIA | 137.002.972 |
| | 5.12" DIA | 137.002.940 |
| | 5.35" DIA | 137.002.974 |
| 4 | MOTOR, JM140/180 | See Chart |
| 8 | RING | 137.002.931 |
| 11 | COVER, 304SS | 137.002.911 |
| 14* | SHAFT SLEEVE, 304SS | 137.002.912 |
| 26* | IMPELLER RETAINER, 304SS | 118.000.111A |
| 32* | KEY, 303SS | 102.000.102 |
| 38* | O-RING, SHAFT, BUNA | 116.000.117 |
| 40* | FLINGER, 304SS | 104.000.165 |
| 71 | ADAPTER, IRON, JM140/180 | 137.002.910 |
| 73* | GASKET, CASE, BUNA | 137.002.913 |
| 73A* | GASKET, COVER, BUNA | 137.003.012 |
| 89* | 1-1/4" SEALS | |
| | TYPE 21, BN-CARB/CM | 137.002.949 |
| | TYPE 21, VN-CARB/CM | 137.002.950 |
| | TYPE 21, VN-CARB/SIL | 137.002.952 |
| | TYPE 21, VN-SIL/SIL | 137.002.953 |
| | TYPE 21, EPDM-CARB/SIL | 137.002.951 |
| 89A | SEAL RETAINER, STAINLESS | 137.002.948 |
| -- | REPAIR KITS: | |
| | BN-CARB/CM SEAL | 118.000.674 |
| | VN-CARB/CM SEAL | 118.000.674A |
| | VN-CARB/SIL SEAL | 118.000.674D |
| | VN-SIL/SIL SEAL | 118.000.674B |
| | EPDM-CARB/SIL SEAL | 118.000.674C |

* DENOTES COMPONENTS INCLUDED IN REPAIR KIT.

Pump 326 • 304SS • JM Frame • 1750 RPM



| CONSTRUCTION OPTIONS | | |
|----------------------|-------------------|----------------------------------|
| KEY | PART NAME | STANDARD FITTED |
| 1 | Case | 304SS |
| 2 | Impeller | 304SS |
| 8 | Impeller Ring | POLYPHENYLENE OXIDE 20% GLASS |
| 11 | Cover | 304SS |
| 14 | Sleeve | 304SS |
| 26 | Retainer Assembly | 304SS |
| 32 | Key | 303SS |
| 38 | O-ring, Shaft | BUNA |
| 40 | Flinger | 304SS |
| 71 | Motor Disc | Cast Iron |
| 73 | Gasket, Case | Buna |
| 73A | Gasket, Cover | Buna |
| 89 | Seal Assembly | BN-CARB/CM |
| 89A | Seal Retainer | 304SS |

E320JM

D18

C3261750JM