



A WILO COMPANY

MOTORPUMP™ — 1750 RPM

60 HERTZ, 2.50 X 1.50 FLG

D323JM14-18

DRAWING DEPICTS 14-18JM 5HP TEFC MOTOR

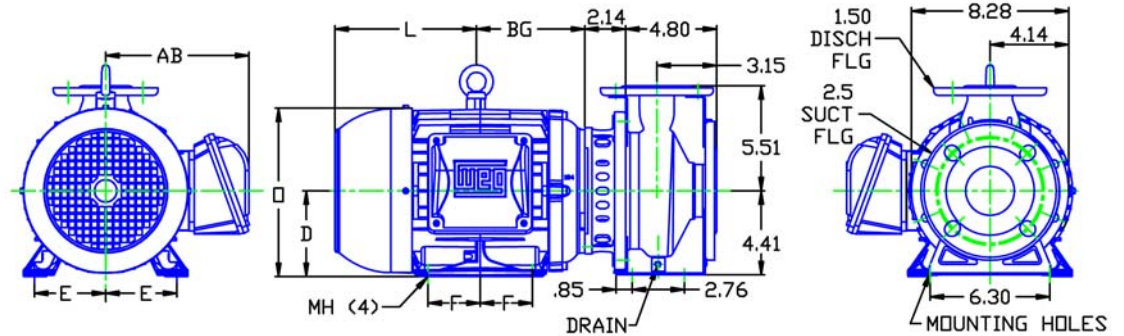
323

JM

MOTOR DIMENSIONS

NEMA PREMIUM EFFICIENT JM FRAME 3 PHASE 1750 RPM

HP	Type	Frame	D	E	F	O	AB	BG	L	MH
1	ODP	JM143	3.50	2.75	2.00	6.75	5.42	4.25	5.07	0.34
1	TEFC	JM143	3.50	2.75	2.00	7.00	6.25	4.57	5.84	0.34



ALL DIMENSIONS IN INCHES.

DRAWING REPRESENTS APPROXIMATE PUMP DIMENSIONS. ATOCAD DRAWING TO SCALE AVAILABLE FROM FACTORY.

**PUMP TO BE
INSTALLED ONLY IN
THE HORIZONTAL
POSITION AS
SHOWN.**



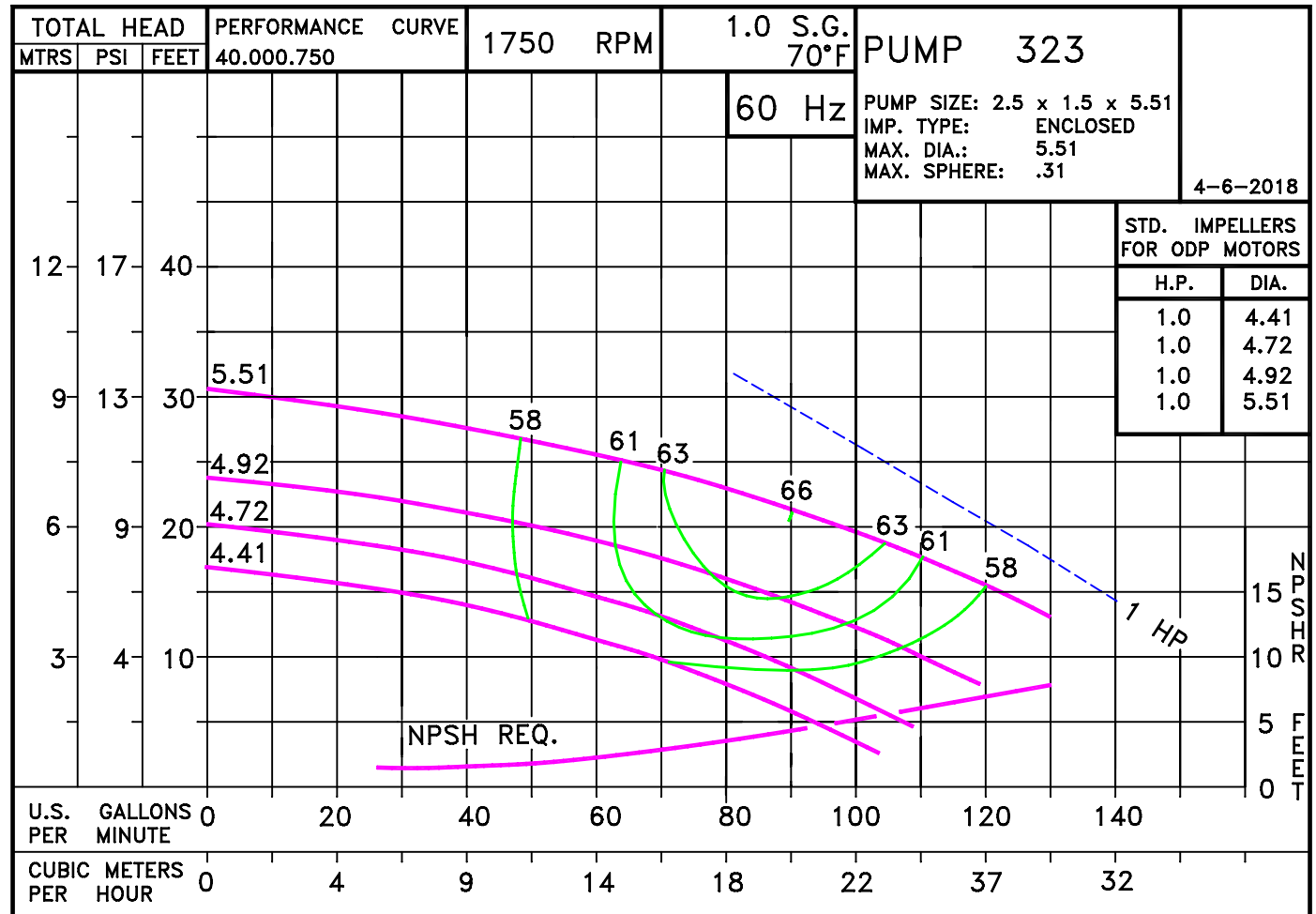
32375TE

D323JM14-18
3231750

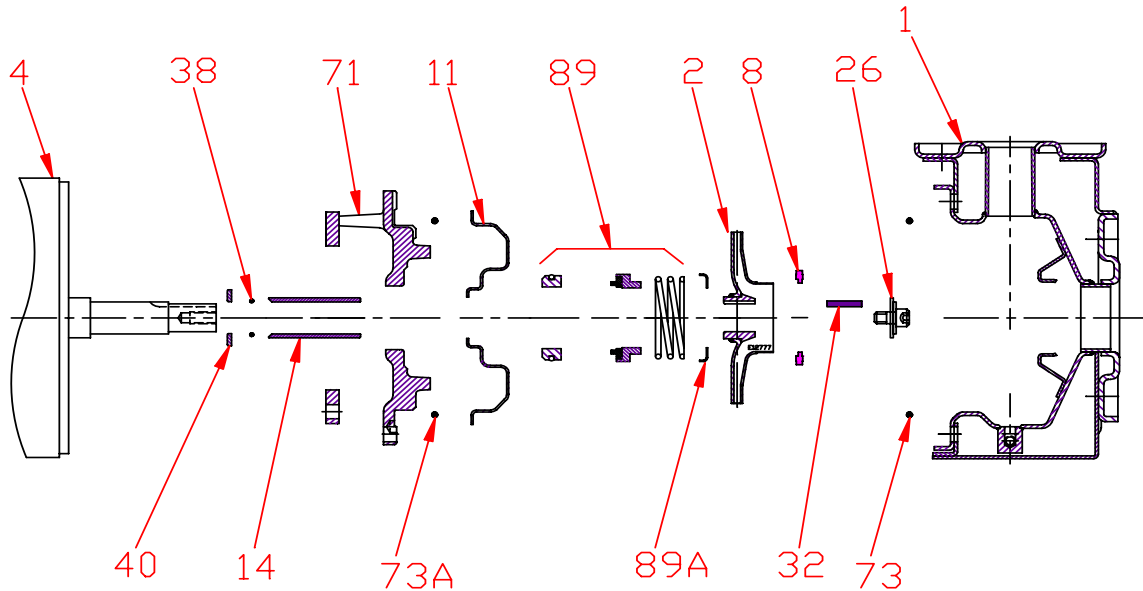
323

JM

3231750JM
81.002.234 D18



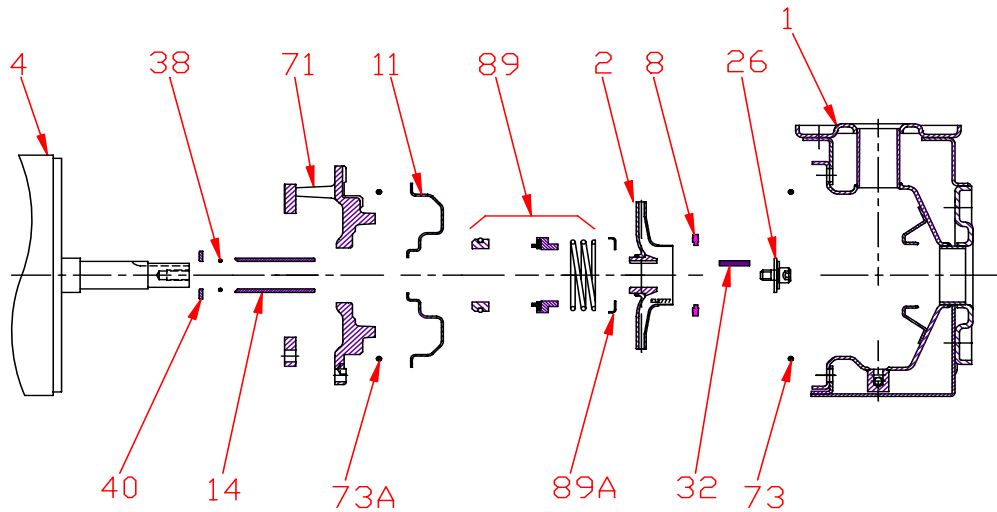
Pump 323 • 304SS • JM Frame • 1750 RPM



KEY NO.	PART NAME	PUMP 323
1	CASE, 304SS, 2.5 x 1.5, FLG	137.002.958
2	IMPELLER, STAINLESS, ENCLOSED, 7/8" KEYED:	
	4.41" DIA	137.002.965
	4.72" DIA	137.002.966
	4.92" DIA	137.002.928
	5.51" DIA	137.002.930
4	MOTOR, JM140/180	See Chart
8	RING	137.002.929
11	COVER, 304SS	137.002.903
14*	SHAFT SLEEVE, 304SS	137.002.920
26*	IMPELLER RETAINER, 304SS	118.000.111A
32*	KEY, 303SS	137.002.924
38*	O-RING, SHAFT, BUNA	116.000.117
40*	FLINGER, 304SS	104.000.165
71	ADAPTER, IRON, JM140/180	137.002.918
73*	GASKET, CASE, BUNA	137.002.905
73A*	GASKET, COVER, BUNA	137.003.011
89*	1-1/4" SEALS	
	TYPE 21, BN-CARB/CM	137.002.949
	TYPE 21, VN-CARB/CM	137.002.950
	TYPE 21, VN-CARB/SIL	137.002.952
	TYPE 21, VN-SIL/SIL	137.002.953
	TYPE 21, EPDM-CARB/SIL	137.002.951
89A	SEAL RETAINER, STAINLESS	137.002.948
--	REPAIR KITS:	
	BN-CARB/CM SEAL	118.000.673
	VN-CARB/CM SEAL	118.000.673A
	VN-CARB/SIL SEAL	118.000.673D
	VN-SIL/SIL SEAL	118.000.673B
	EPDM-CARB/SIL SEAL	118.000.673C

* DENOTES COMPONENTS INCLUDED IN REPAIR KIT.

Pump 323 • 304SS • JM Frame • 1750 RPM



CONSTRUCTION OPTIONS		
KEY	PART NAME	STANDARD FITTED
1	Case	304SS
2	Impeller	304SS
8	Impeller Ring	POLYPHENYLENE OXIDE 20% GLASS
11	Cover	304SS
14	Sleeve	304SS
26	Retainer Assembly	304SS
32	Key	303SS
38	O-ring, Shaft	BUNA
40	Flinger	304SS
71	Motor Disc	Cast Iron
73	Gasket, Case	Buna
73A	Gasket, Cover	Buna
89	Seal Assembly	BN-CARB/CM
89A	Seal Retainer	304SS

E320JM

D18

C3231750JM