

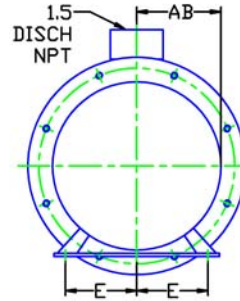
MOTOR DIMENSIONS

NEMA PREMIUM EFFICIENT JM FRAME 3 PHASE 1750 RPM

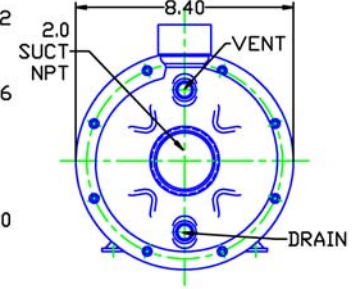
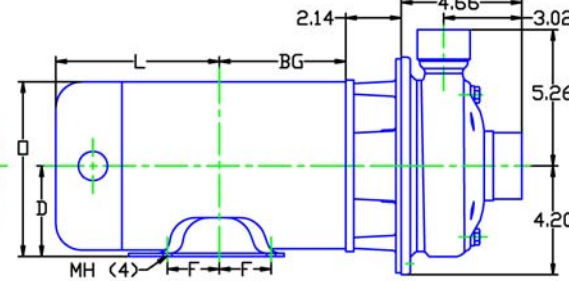
| HP | Type | Frame | D | E | F | O | AB | BG | L | MH |
|--------|------|-------|------|------|------|------|------|------|------|------|
| .75, 1 | ODP | JM143 | 3.50 | 2.75 | 2.00 | 6.77 | 5.67 | 4.88 | 4.63 | 0.34 |
| .75, 1 | TEFC | JM143 | 3.50 | 2.75 | 2.00 | 7.00 | 6.25 | 4.57 | 5.84 | .34 |

Note: 3/4HP is a derated 1HP motor

D236JM143

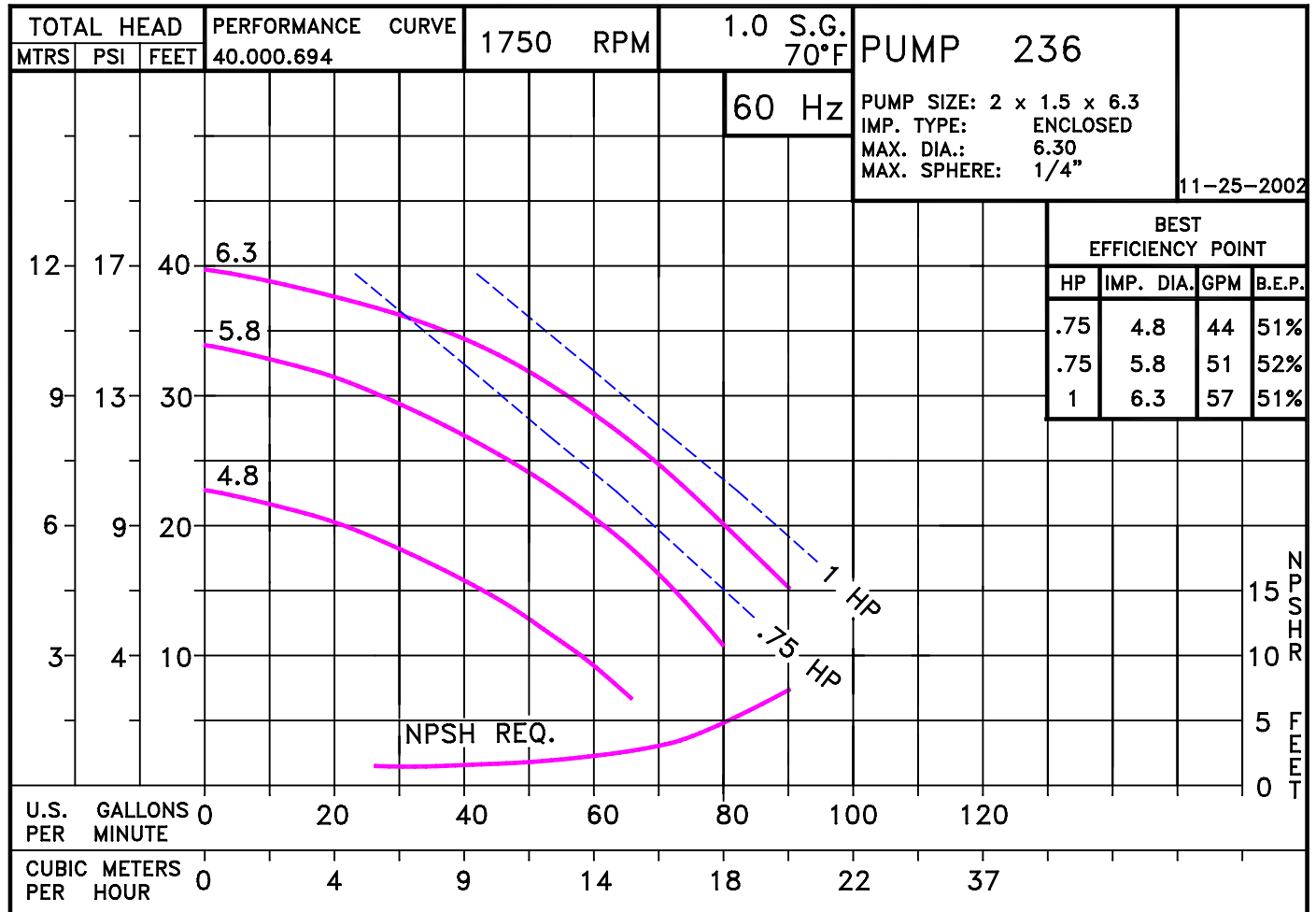


DRAWING DEPICTS 143JM 1HP ODP MOTOR



ALL DIMENSIONS IN INCHES.

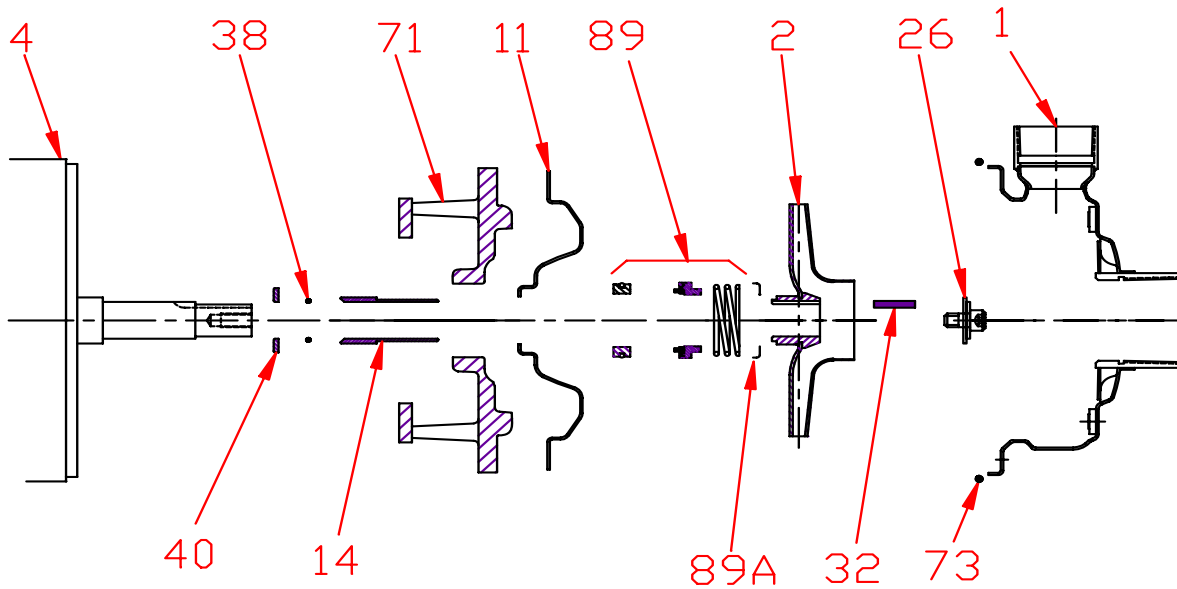
DRAWING REPRESENTS APPROXIMATE PUMP DIMENSIONS. ATOCAD DRAWING TO SCALE AVAILABLE FROM FACTORY.



23675DP

D236JM145
2361750

Pump 236 • 304SS • JM Frame • 1750 RPM



| KEY NO. | PART NAME | PUMP 236 |
|---------|--|--------------|
| 1 | CASE, 304SS, 2.0 x 1.5, NPT | 137.001.457 |
| 2 | IMPELLER, STAINLESS, ENCLOSED, 7/8" KEYED: | |
| | 4.80" DIA | 137.001.474 |
| | 5.80" DIA | 137.001.473 |
| | 6.30" DIA | 137.001.458 |
| 4 | MOTOR, JM140/180 | See Chart |
| 11 | COVER, 304SS | 137.001.459 |
| 14* | SHAFT SLEEVE, 304SS | 137.001.476 |
| 26* | IMPELLER RETAINER, 304SS | 118.000.111A |
| 32* | KEY, 303SS | 102.000.102 |
| 38* | O-RING, SHAFT, BUNA | 116.000.117 |
| 40* | FLINGER, 304SS | 104.000.165 |
| 71 | DISC, IRON | 137.001.435 |
| 73* | GASKET, CASE, BUNA | 137.001.121 |
| 89* | 1-1/8" SEALS | |
| | TYPE 21, BN-CARB/CM | 137.001.079 |
| | TYPE 21, VN-CARB/CM | 137.001.324 |
| | TYPE 21, VN-CARB/SIL | 137.001.669 |
| | TYPE 21, VN-SIL/SIL | 137.001.546 |
| | TYPE 21, EPDM-CARB/SIL | 137.001.490 |
| 89A | SEAL RETAINER, STAINLESS | 137.001.477A |
| -- | REPAIR KITS: | |
| | BN-CARB/CM SEAL | 118.000.605 |
| | VN-CARB/CM SEAL | 118.000.605A |
| | VN-CARB/SIL SEAL | 118.000.605D |
| | VN-SIL/SIL SEAL | 118.000.605B |
| | EPDM-CARB/SIL SEAL | 118.000.605C |

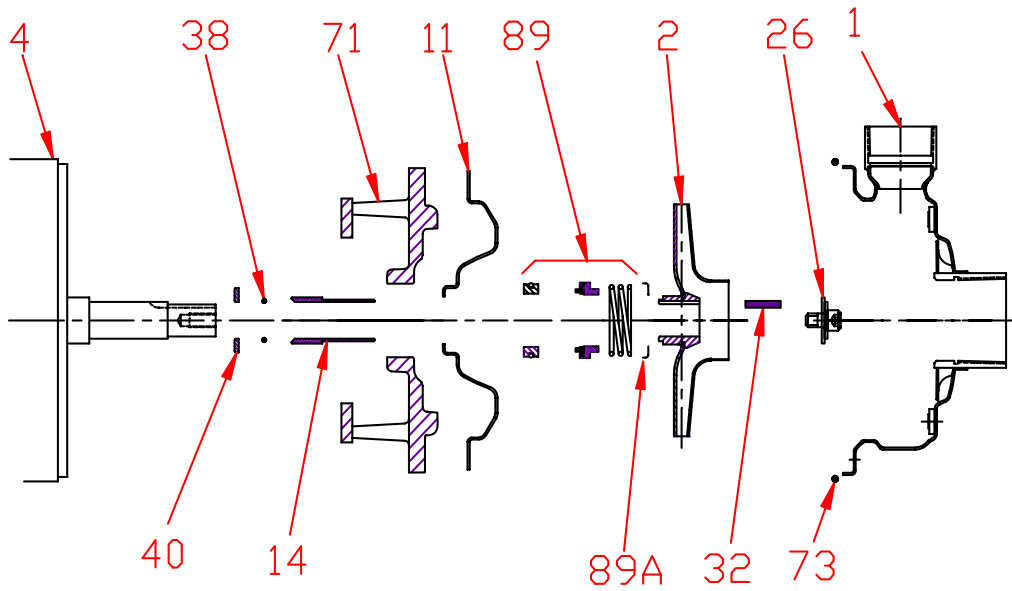
* DENOTES COMPONENTS INCLUDED IN REPAIR KIT.

E236JM

M13

P2361750JM

Pump 236 • 304SS • JM Frame • 1750 RPM



| CONSTRUCTION OPTIONS | | |
|----------------------|-------------------|-----------------|
| KEY | PART NAME | STANDARD FITTED |
| 1 | Case | 304SS |
| 2 | Impeller | 304SS |
| 11 | Cover | 304SS |
| 14 | Sleeve | 304SS |
| 26 | Retainer Assembly | 304SS |
| 32 | Key | 303SS |
| 38 | Gasket Shaft | BUNA |
| 40 | Flinger | 304SS |
| 71 | Motor Disc | Cast Iron |
| 73 | Gasket, Case | Buna |
| 89 | Seal Assembly | BN-CARB/CM |
| 89A | Seal Retainer | 304SS |

E236JM

M13

C2361750JM