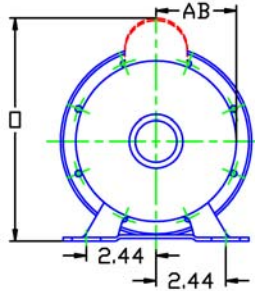


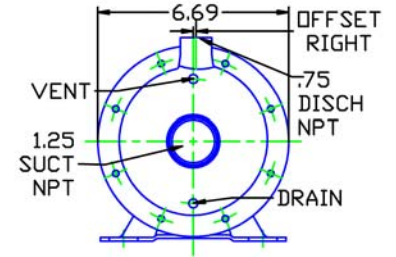
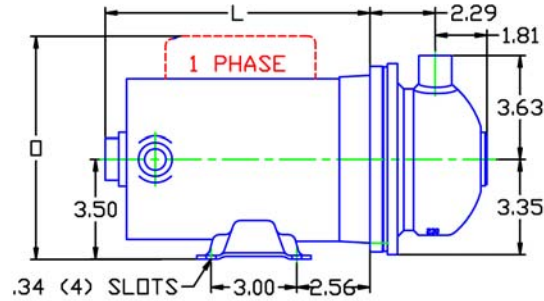
MOTOR DIMENSIONS NEMA J56 FRAME 1750 RPM

| HP | FRAME | TYPE | 3PH | | | 1PH | | |
|-----|-------|------|------|------|------|------|------|------|
| | | | L | O | AB | L | O | AB |
| .25 | J56 | ODP | 9.27 | 5.63 | 3.25 | 9.27 | 7.13 | 3.25 |

D230J561750



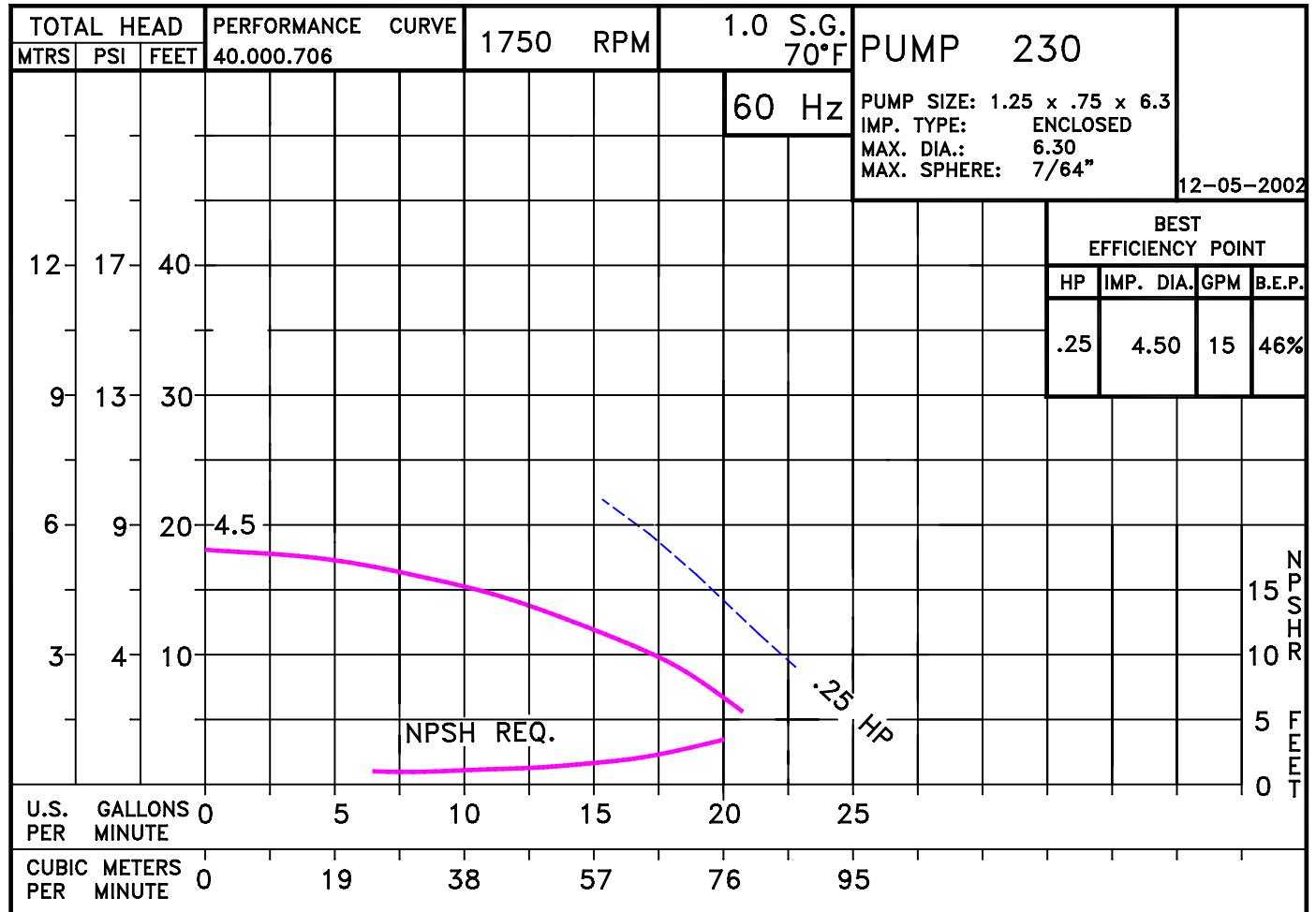
DRAWING DEPICTS J56 1 PHASE ODP MOTOR



ALL DIMENSIONS IN INCHES.

DRAWING REPRESENTS APPROXIMATE PUMP DIMENSIONS. ATOCAD DRAWING TO SCALE AVAILABLE FROM FACTORY.

PUMP TO BE
INSTALLED ONLY IN
THE HORIZONTAL
POSITION AS
SHOWN.



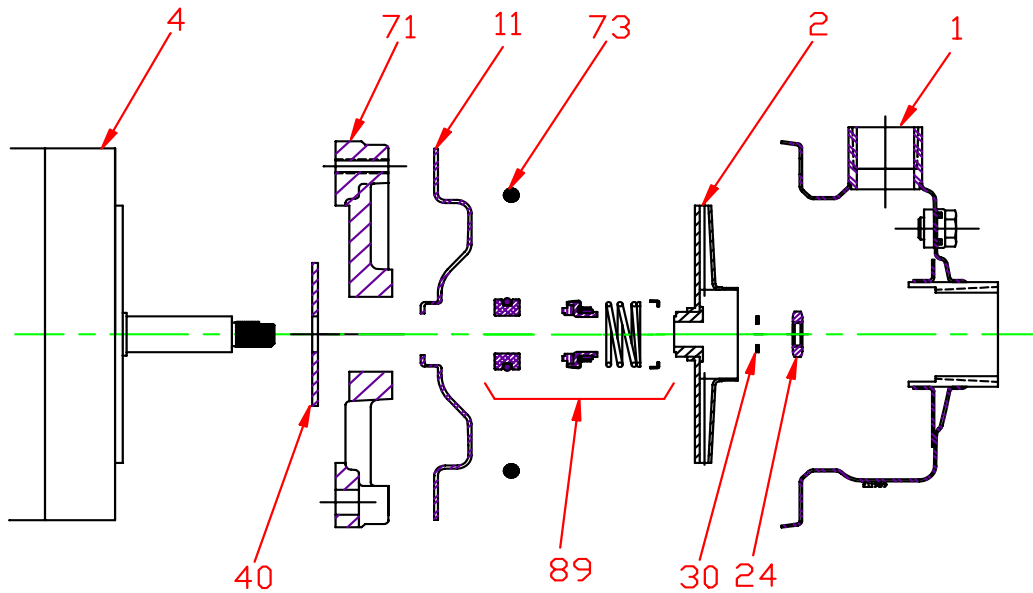
23005PH1

D230J561750
2301750

230 J56

2301750J56
81.001.869 K12

Pump 230 • 304SS • J56 Frame • 1750 RPM



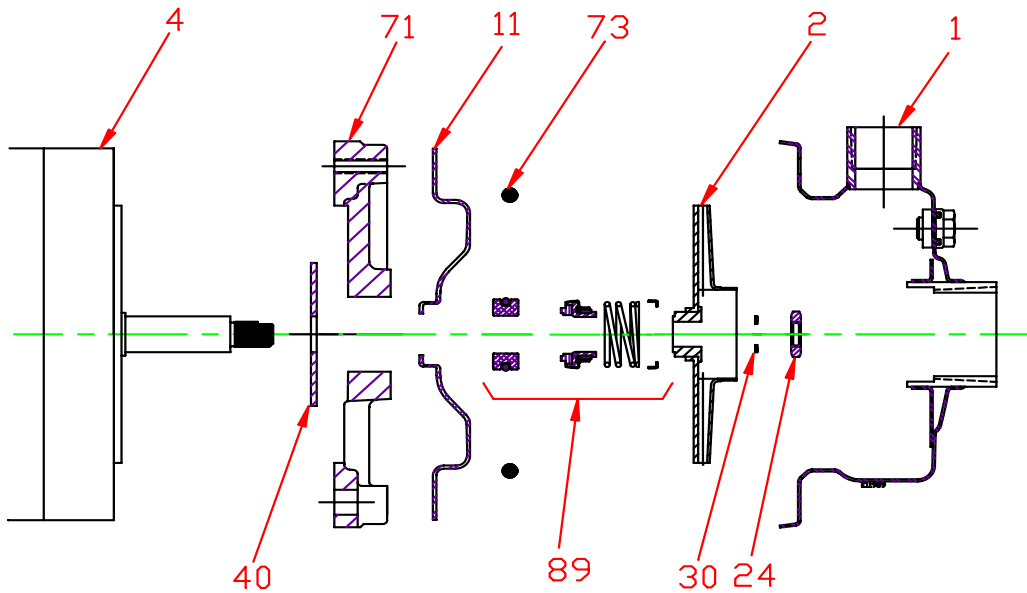
| KEY NO. | PART NAME | PUMP 230 | |
|--|--|--------------|----------------|
| 1 | CASE, 304SS, 1.25 x .75, NPT | 137.001.607 | |
| 2 | IMPELLER, STAINLESS, ENCLOSED, 7/16" THREADED: | | |
| | 4.00" DIA | 137.001.374 | |
| | 4.50" DIA | 137.001.058 | |
| 4 | MOTOR: | | |
| | J56/56B, 3.5" RIGID BASE | See Chart | |
| 11 | COVER, STAINLESS | 137.001.608 | |
| 24* | NUT, 304SS | 137.001.349 | |
| 30* | D WASHER, 316SS | 104.000.168 | |
| 40* | FLINGER, NEOPRENE | 104.000.171 | |
| 71 | DISC, IRON | 137.001.609 | |
| 73* | GASKET, CASE, BUNA | 137.001.610 | |
| 89* | 5/8" SEALS WITH RETAINER: | | |
| | TYPE 21, BN-CARB/CM | 137.002.401 | |
| | TYPE 21, VN-CARB/SIL | 137.002.390 | |
| | TYPE 21, VN-SIL/SIL | 137.002.406 | |
| | TYPE 21, EPDM-CARB/SIL | 137.002.258 | |
| -- | REPAIR KITS: | 3 PHASE: | † 1 PHASE: |
| | BN-CARB/CM SEAL | 118.000.618 | 118.000.618.1 |
| | VN-CARB/SIL SEAL | 118.000.618D | 118.000.618D.1 |
| | VN-SIL/SIL SEAL | 118.000.618E | 118.000.618E.1 |
| | EPDM-CARB/SIL SEAL | 118.000.618C | 118.000.618C.1 |
| * DENOTES COMPONENTS INCLUDED IN REPAIR KIT. | | | |
| + NOT REQUIRED ON 1 PHASE MOTORS. | | | |

E230J56

K12

P2301750J56

Pump 230 • 304SS • J56 Frame • 1750 RPM



| CONSTRUCTION OPTIONS | | |
|----------------------|---------------|-----------------|
| KEY | PART NAME | STANDARD FITTED |
| 1 | Case | 304SS |
| 2 | Impeller | 304SS |
| 11 | Cover | 304SS |
| 24 | Nut | 304SS |
| 30 | D-Washer | 316SS |
| 40 | Flinger | Neoprene |
| 71 | Motor Disc | Cast Iron |
| 73 | Gasket, Case | Buna |
| 89 | Seal Assembly | BN-CARB/SIL |
| 89A | Seal Retainer | 304SS |

E230J56

K12

C2301750J56