

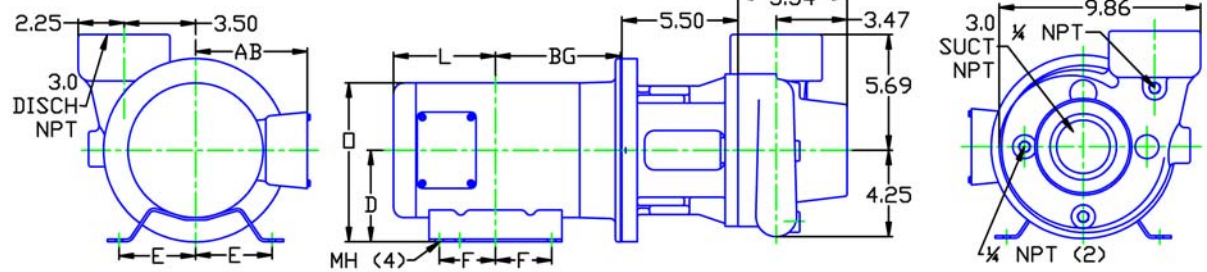
### MOTOR DIMENSIONS

#### NEMA TC FRAME 3 PHASE 3500 RPM

HP	TYPE	Frame	D	E	F	O	AB	BG	L	MH
3	TEFC	TC182	4.50	3.75	2.25	9.34	7.56	5.00	6.99	.41
5	TEFC	TC184	4.50	3.75	2.75	9.34	7.56	5.50	7.49	.41
7.5	TEFC	TC213	5.25	4.25	2.75	10.84	8.58	6.25	8.40	.41
10	TEFC	TC215	5.25	4.25	3.50	10.84	8.58	7.00	9.14	.41
15	TEFC	TC215	5.25	4.25	3.50	10.84	8.58	7.00	9.14	.41

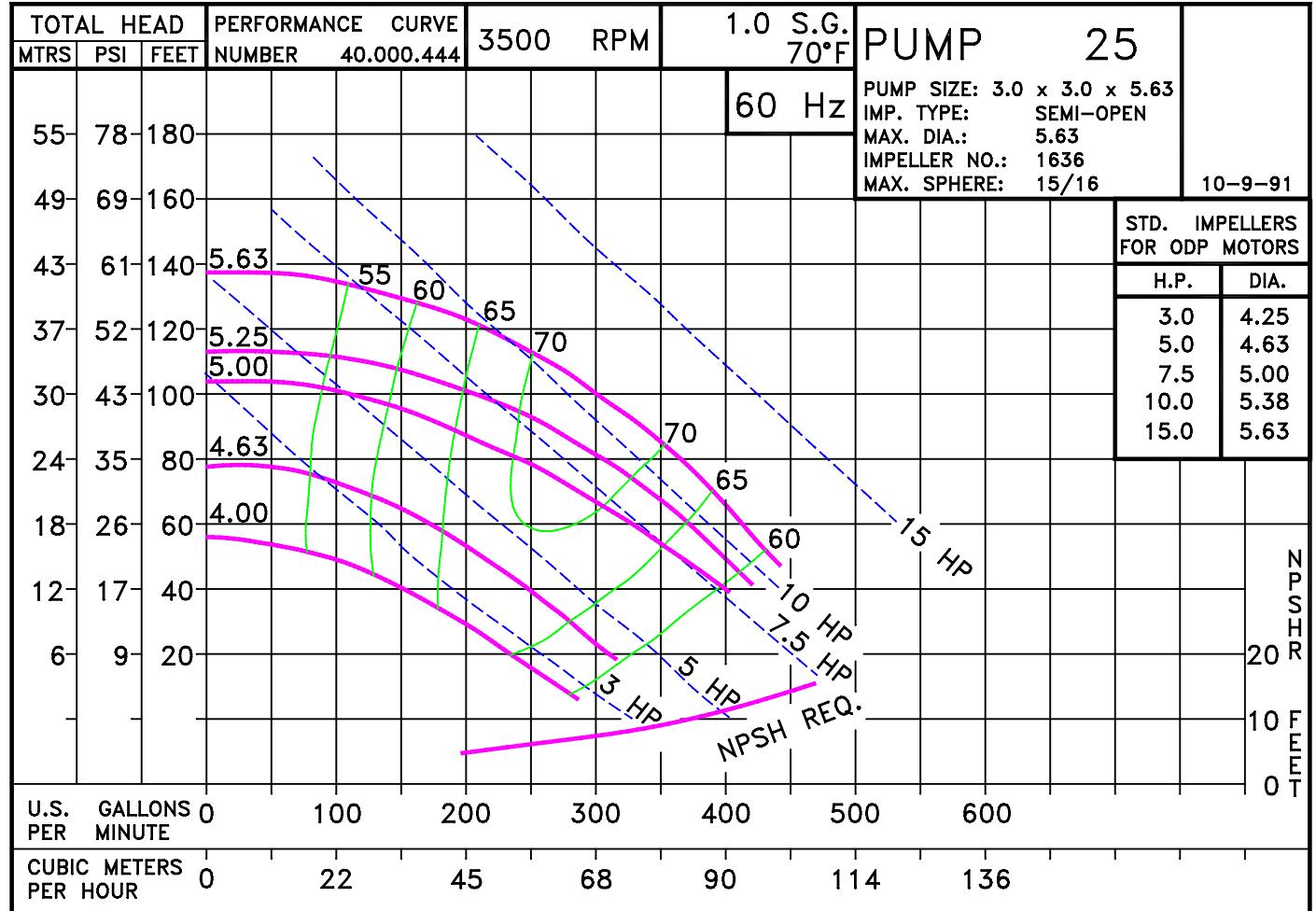
D025STC182

DRAWING DEPICTS 182TC 5HP ODP MOTOR



### ALL DIMENSIONS IN INCHES

DRAWING REPRESENTS APPROXIMATE PUMP DIMENSIONS. AUTOCAD DRAWINGS TO SCALE AVAILABLE FROM FACTORY



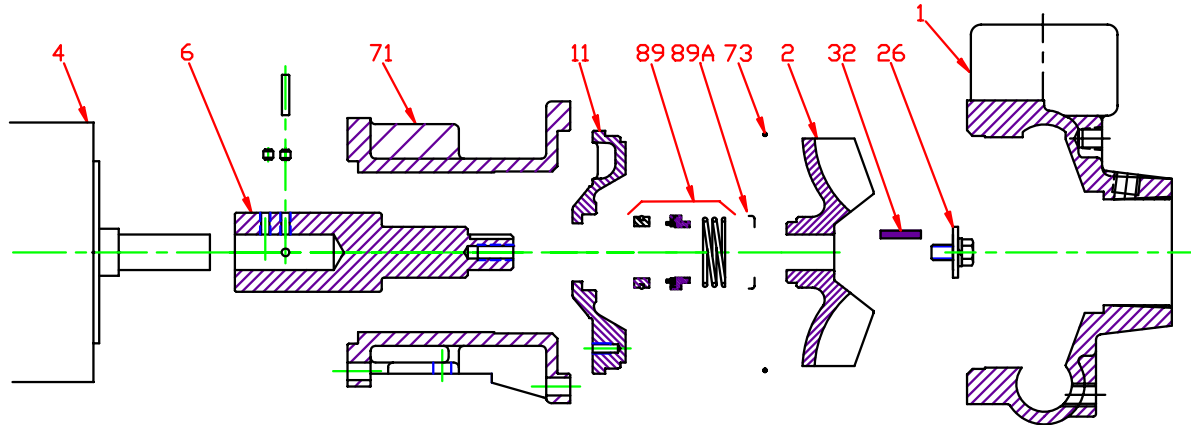
01515TE

D025STC182  
0253500

# 25S TC

025S3500TC  
81.001.516 J12

**Pump 25S • 316SS • TC Frame • 3500 RPM**



KEY NO.	PART NAME	MOTOR FRAME		
		TC140	TC180	TC210
1	CASE, 316SS, 3 x 3 NPT	130.000.336X		
2	IMPELLER, 7/8" KEYED, SEMI-OPEN, SPECIFY DIAMETER: 316SS	137.000.869		
4	MOTOR, TC	See Chart	See Chart	See Chart
6*+	STUB SHAFT ASS'Y, 316SS	135.000.221X	135.000.221AX	135.000.221BX
11	BACKPLATE, 316SS	132.000.224		
26*	IMPELLER RETAINER, 316SS	118.000.111C		
32*	KEY, 316SS	102.000.218		
71	ADAPTER, IRON	132.000.120	132.000.122	132.000.122
73*	GASKET, CASE, VITON	116.000.150		
89*	SEAL, 1¼", VN-SIL/SIL	101.000.203A		
89A*	SEAL RETAINER, 316SS	137.002.548		
--	REPAIR KIT, VN-SIL/SIL	118.000.645	118.000.646	118.000.647

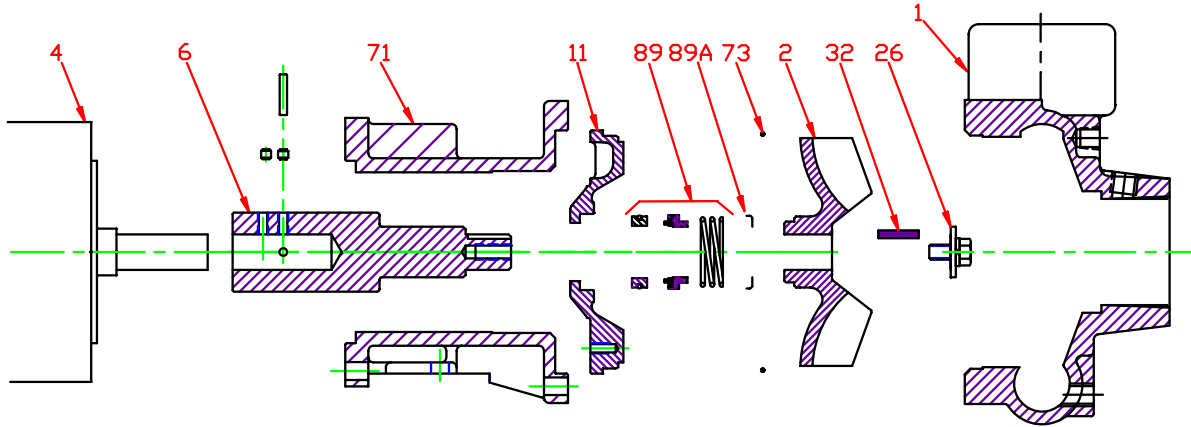
\* DENOTES COMPONENTS INCLUDED IN REPAIR KIT.  
+ ASS'Y INCLUDES STUB SHAFT, PIN, SET SCREWS AND KEY.

E025STC

E12

P025S3500TC

**Pump 25S • 316SS • TC Frame • 3500 RPM**



CONSTRUCTION OPTIONS		
KEY NO.	PART NAME	STANDARD FITTED
1	CASE	316SS
2	IMPELLER	316SS
6	STUB SHAFT ASS'Y	316SS
11	BACKPLATE	316SS
26	IMPELLER RETAINER	316SS
32	KEY	316SS
71	ADAPTER	IRON
73	GASKET, CASE	VITON
89	SEAL ASSEMBLY	VN-SIL/SIL

E025STC

E12

C025S3500TC