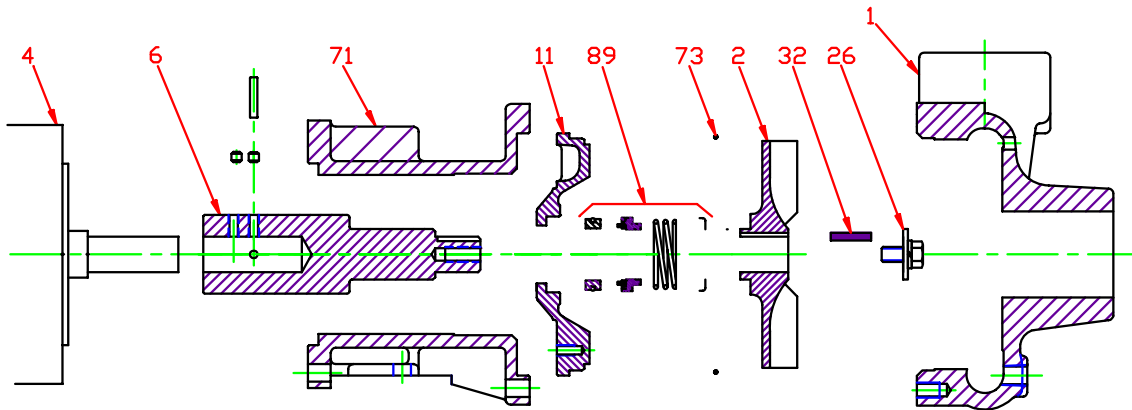


Pump 19GS • 316SS • TC Frame • 3500 RPM



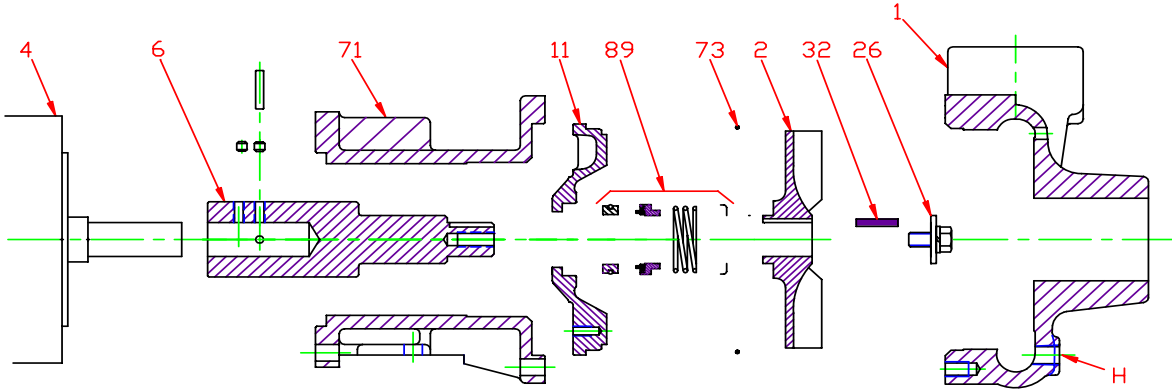
KEY NO.	PART NAME	TC140	TC180	TC210
1	CASE, 316SS, 2 x 1.5 NPT		137.000.841X	
2	IMPELLER, 7/8" KEYED, SEMI-OPEN, SPECIFY DIAMETER: 316SS		131.000.782	
4	MOTOR, TC	See Chart	See Chart	See Chart
6*+	STUB SHAFT ASS'Y, 316SS	135.000.221X	135.000.221AX	135.000.221BX
11	BACKPLATE, 316SS		132.000.224	
26*	IMPELLER RETAINER, 316SS		118.000.111C	
32*	KEY, 316SS		102.000.218	
71	ADAPTER, IRON	132.000.120	132.000.122	132.000.122
73*	GASKET, CASE, VITON		116.000.150	
89*	SEAL, 1 1/4", VN-SIL/SIL		101.000.203A	
--	REPAIR KIT, VN-SIL/SIL	118.000.539A	118.000.540A	118.000.541A
* DENOTES COMPONENTS INCLUDED IN REPAIR KIT.				
+ ASS'Y INCLUDES STUB SHAFT, PIN, SET SCREWS AND KEY.				

E019GSTC

M16

P019GS3500TC

Pump 19GS • 316SS • TC Frame • 3500 RPM



CONSTRUCTION OPTIONS		
KEY NO.	PART NAME	STANDARD FITTED
1	CASE	316SS
2	IMPELLER	316SS
6	STUB SHAFT ASS'Y	316SS
11	BACKPLATE	316SS
26	IMPELLER RETAINER	316SS
32	KEY	316SS
71	ADAPTER	IRON
73	GASKET, CASE	VITON
89	SEAL ASSEMBLY	VN-SIL/SIL
H	PLUG, DRAIN	316SS

E019GSTC

C15

C019GS3500TC