

MOTOR DIMENSIONS

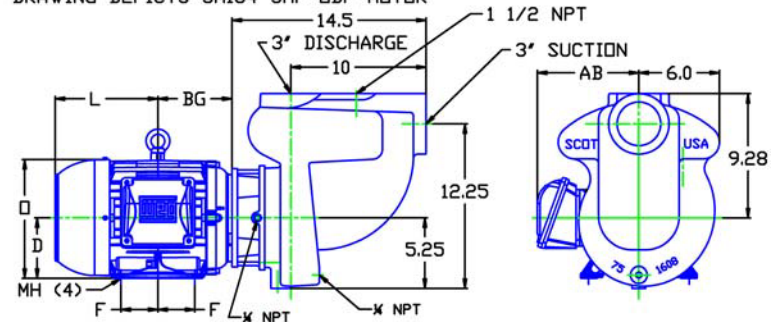
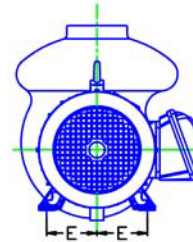
NEMA PREMIUM EFFICIENT JM FRAME 3 PHASE 3500 RPM

HP	Type	Frame	D	E	F	O	AB	BG	L	MH
5	ODP	JM182	4.50	3.75	2.25	8.44	6.74	5.75	5.12	0.41
7.5	ODP	JM184	4.50	3.75	2.25	8.44	6.74	5.75	6.56	0.41
5, 7.5	TEFC	JM184	4.35	4.50	3.75	2.25	9.34	7.57	5.50	7.76

Note: Pump uses a portion of the motor service factor at 5HP.
A 7.5HP motor is non-overloading throughout the curve

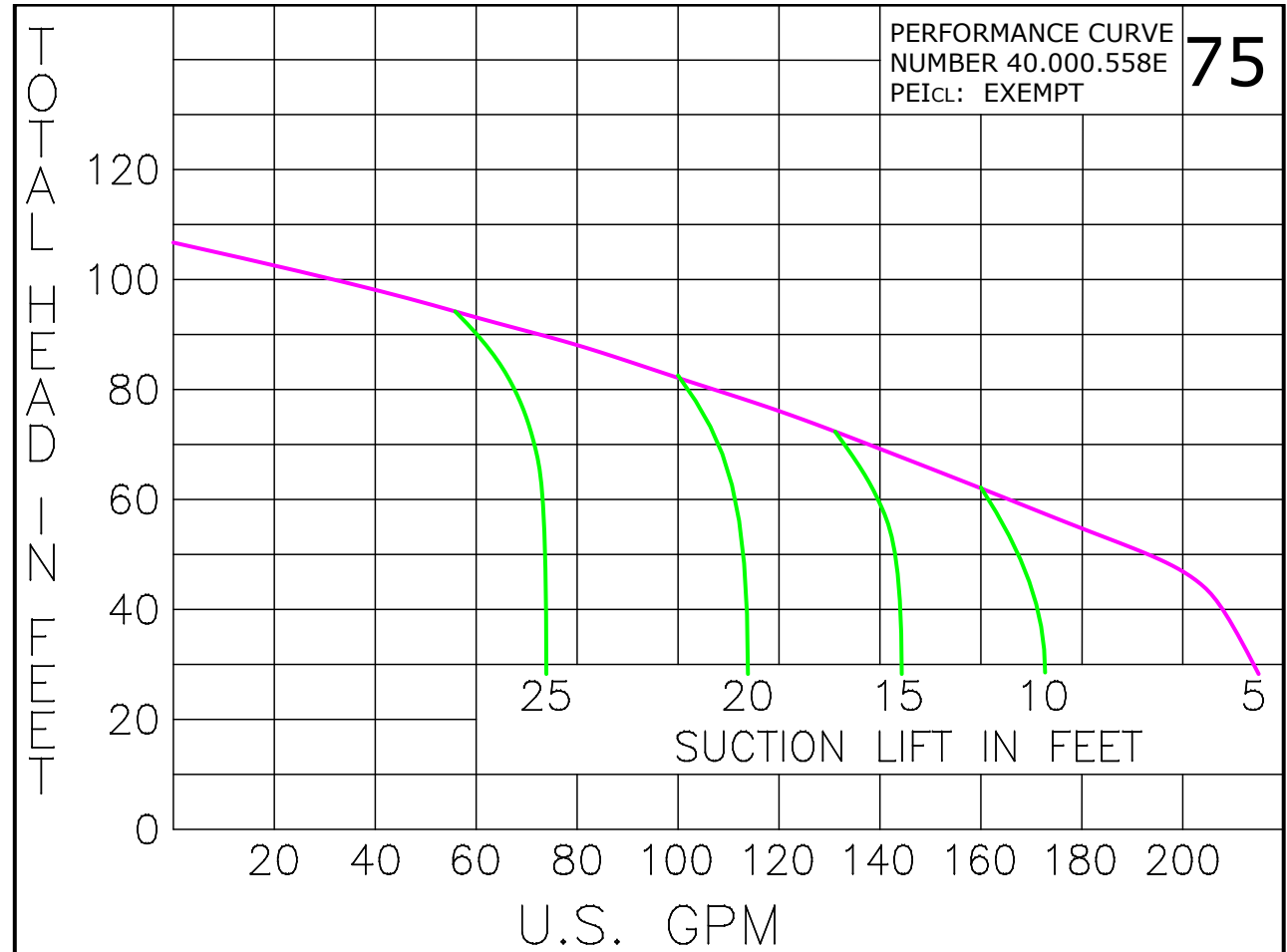
D075JM184

DRAWING DEPICTS JM184 5HP ODP MOTOR



ALL DIMENSIONS IN INCHES

DRAWING REPRESENTS APPROXIMATE PUMP DIMENSIONS.



07510TE

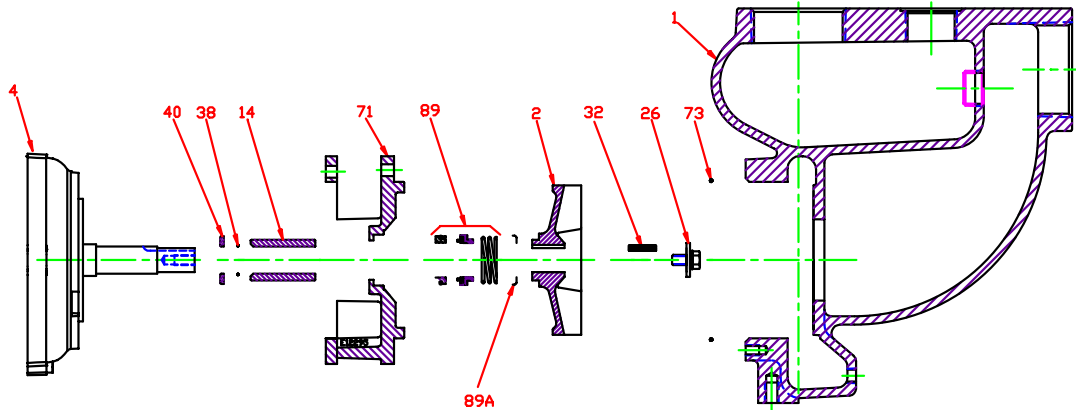
D075JM184
07553500

75 JM

07553500JM
81.001.067A

B20

Pump 75 • Iron • 5 HP • JM Frame • 3500 RPM



KEY NO.	PART NAME	5 HP
1	CASE, IRON, 3 x 3 NPT	130.000.295X
2	IMPELLER, 7/8" KEYED, SEMI-OPEN, 5.50" DIA (NARROW VANE): IRON	131.000.758
4	MOTOR, JM	See Chart
14*	SHAFT SLEEVE BRONZE STAINLESS	110.000.178 110.000.192
26*	IMPELLER RETAINER, STAINLESS	118.000.597
32*	KEY, STAINLESS	102.000.102
38*	O-RING, SHAFT BUNA VITON	116.000.117 116.000.105
40*	FLINGER, STAINLESS	104.000.165A
71	ADAPTER, IRON	132.000.194X
73*	GASKET, CASE, BUNA	116.000.146
89*	1½" SEALS: TYPE 21, BN-CARB/CM TYPE 21, VN-CARB/CM TYPE 21, VN-CARB/SIL	101.000.168 101.000.191 101.000.175
89A*	SEAL RETAINER	104.000.175
--	° REPAIR KITS: BN-CARB/CM SEAL VN-CARB/CM SEAL (S) VN-CARB/SIL SEAL VN-SIL/SIL SEAL (S)	118.000.527A 118.000.527 118.000.527B 118.000.527C
* DENOTES COMPONENTS INCLUDED IN REPAIR KIT.		
° ALL REPAIR KITS INCLUDE THE BRONZE SHAFT SLEEVE EXCEPT THE (S) INDICATED, WHICH IS STAINLESS WITH VITON SHAFT O-RING.		

E075JM

G16

P07553500JM