

MOTOR DIMENSIONS

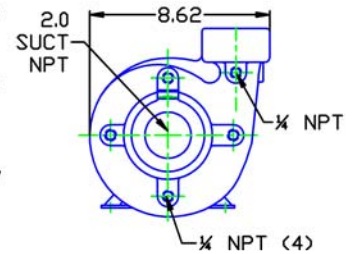
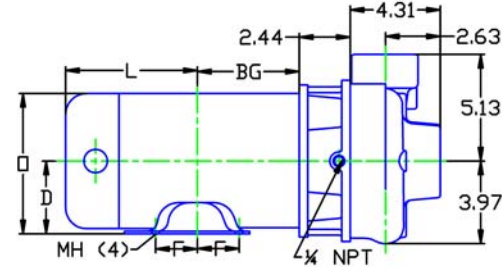
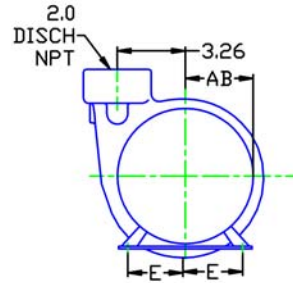
NEMA PREMIUM EFFICIENT JM FRAME 3 PHASE 1750 RPM

HP	Type	Frame	D	E	F	O	AB	BG	L	MH
1	ODP	JM143	3.50	2.75	2.00	6.77	5.67	4.88	4.63	0.34
1	TEFC	JM143	3.50	2.75	2.00	7.00	6.25	4.57	5.84	.34

See C56 frame for .75 HP

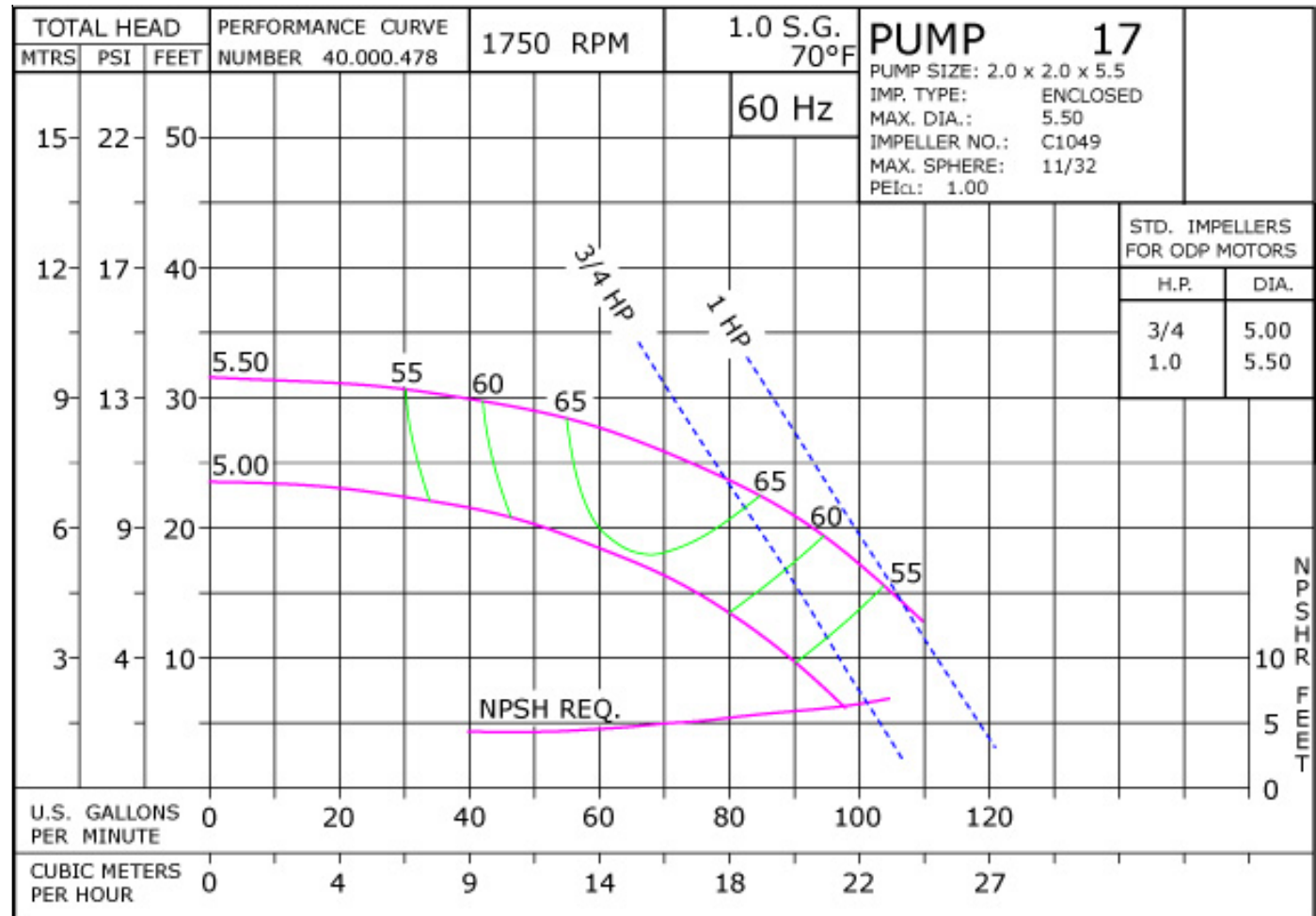
D017JM145

DRAWING DEPICTS JM145 2HP ODP MOTOR



ALL DIMENSIONS IN INCHES.

DRAWING REPRESENTS APPROXIMATE PUMP DIMENSIONS. AUTOCAD DRAWING TO SCALE AVAILABLE FROM FACTORY.



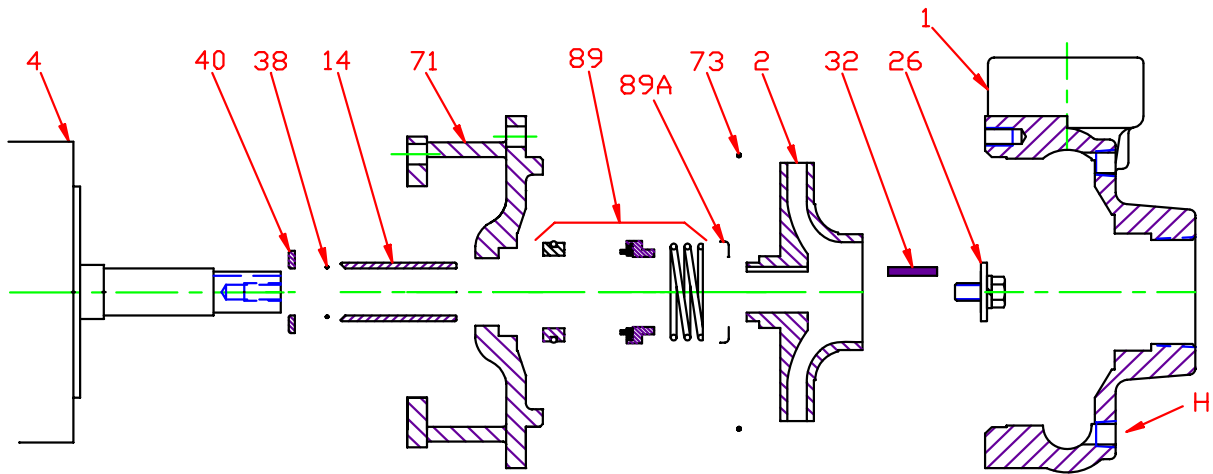
01615DP

D017JMS145
0171750

17
JM

0171750JM
81.001.118 H16

Pump 17 • Iron • JM Frame • 1750 RPM

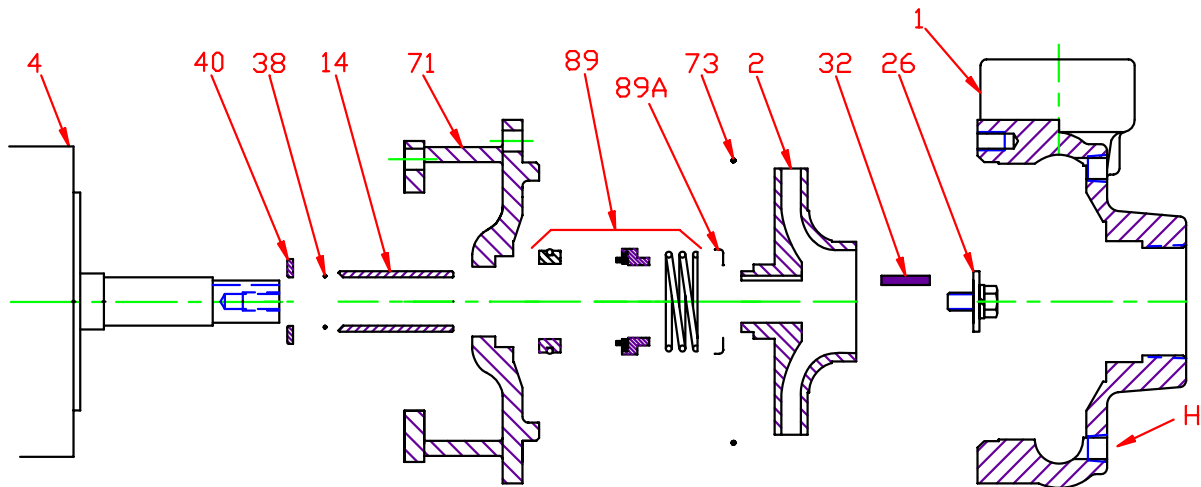


KEY NO.	PART NAME	PUMP NO. 17
1	CASE, IRON, 2 x 2 NPT	130.000.168X
2	IMPELLER, 7/8" KEYED, ENCLOSED, SPECIFY DIAMETER:	
	CIBR	131.000.823
	IRON	137.000.128
	BRONZE	131.000.806
4	MOTOR, JM140/180	See Chart
14*	SHAFT SLEEVE, BRONZE	110.000.178
	SHAFT SLEEVE, STAINLESS	110.000.192
26*	IMPELLER RETAINER, STAINLESS	118.000.111A
32*	KEY, STAINLESS	102.000.102
38	O-RING, SHAFT, BUNA	116.000.117
	O-RING, SHAFT, VITON	116.000.105
40*	FLINGER, STAINLESS	104.000.165
71	ADAPTER, IRON, JM140/180	132.000.194X
73*	GASKET, CASE, BUNA	116.000.146
89*	1½" SEALS:	
	BN-CARBCM	101.000.168
	VN-CARB/CM	101.000.191
	VN-CARB/SIL	101.000.175
	VN-SIL/SIL	101.000.204
	EPDM-CARB/SIL	101.000.175B
	EPDM-SIL/SIL	101.000.204A
89A*	SEAL RETAINER	104.000.175
--	° REPAIR KITS:	
	BN-CARB/CM SEAL	118.000.343
	VN-CARB/CM SEAL (S)	118.000.343A
	VN-CARB/CM SEAL	118.000.343M
	VN-CARB/SIL SEAL	118.000.343B
	VN-SIL/SIL SEAL (S)	118.000.343F
	EPDM-CARB/SIL SEAL	118.000.343D
EPDM-SIL/SIL SEAL	118.000.343J	

* DENOTES COMPONENTS INCLUDED IN REPAIR KIT.

° ALL REPAIR KITS INCLUDE THE BRONZE SHAFT SLEEVE EXCEPT THE (S) INDICATED, WHICH IS STAINLESS WITH VITON SHAFT O-RING.

Pump 17 • Iron • JM Frame • 1750 RPM



CONSTRUCTION OPTIONS				
KEY	PART NAME	STANDARD FITTED	BRONZE FITTED	ALL IRON
1	Case	Iron	Iron	Iron
2	Impeller	CIBR	Bronze	Iron
14	Shaft Sleeve	Bronze	Bronze	Stainless
26	Imp. Retaining Ass'y	Stainless	Stainless	Stainless
32	Key	Stainless	Stainless	Stainless
38	Shaft O-Ring	BUNA	BUNA	BUNA
40	Flinger	Stainless	Stainless	Stainless
71	Adapter	Iron	Iron	Iron
73	Gasket, Case	BUNA	BUNA	BUNA
89	Mechanical Seal, Type 21 BN-CM	Standard	Standard	Standard
89A	Seal Retainer	Stainless	Stainless	Stainless
H	Plug, Drain	Brass	Brass	Plated Steel

CIBR: Cast iron with brass wear ring

E017JM

F12

C0171750JM