

MOTORPUMP™ — 3500 RPM 60 HERTZ, 2.50 X 2.00 FLG

328 JM

D328JM21

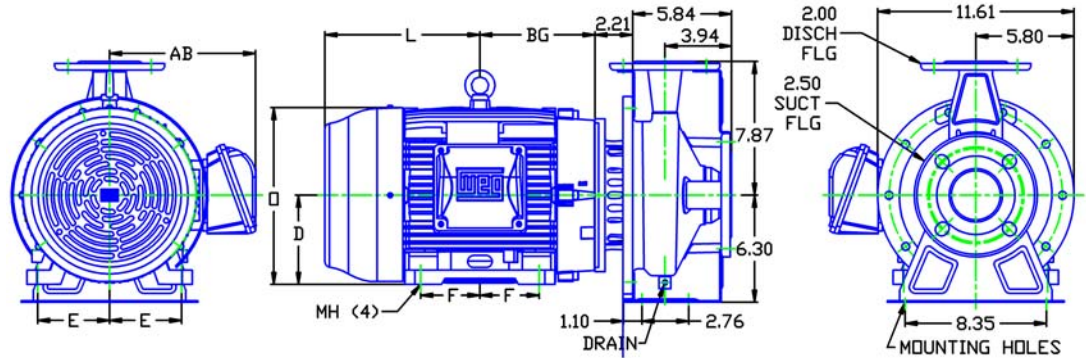
DRAWING DEPICTS 21JM 15HP TEFC MOTOR

MOTOR DIMENSIONS

NEMA PREMIUM EFFICIENT JM FRAME 3 PHASE 3500 RPM

HP	Type	Frame	D	E	F	O	AB	BG	L	MH
15	ODP	JM215	5.25	4.25	3.50	10.03	7.92	7.75	6.19	0.43
* 20	ODP	TCZ254	6.25	5.00	4.13	12.00	9.49	8.88	8.81	0.53
* 25	ODP	TCZ256	6.25	5.00	5.00	12.00	9.49	9.75	7.94	0.53
15	TEFC	JM215	5.25	4.25	3.50	10.37	8.19	6.77	9.16	0.41
* 20	TEFC	TCZ254	6.25	5.00	4.13	12.88	10.04	8.88	10.91	0.53
* 25	TEFC	TCZ256	6.25	5.00	5.00	12.88	10.04	9.75	10.03	0.53

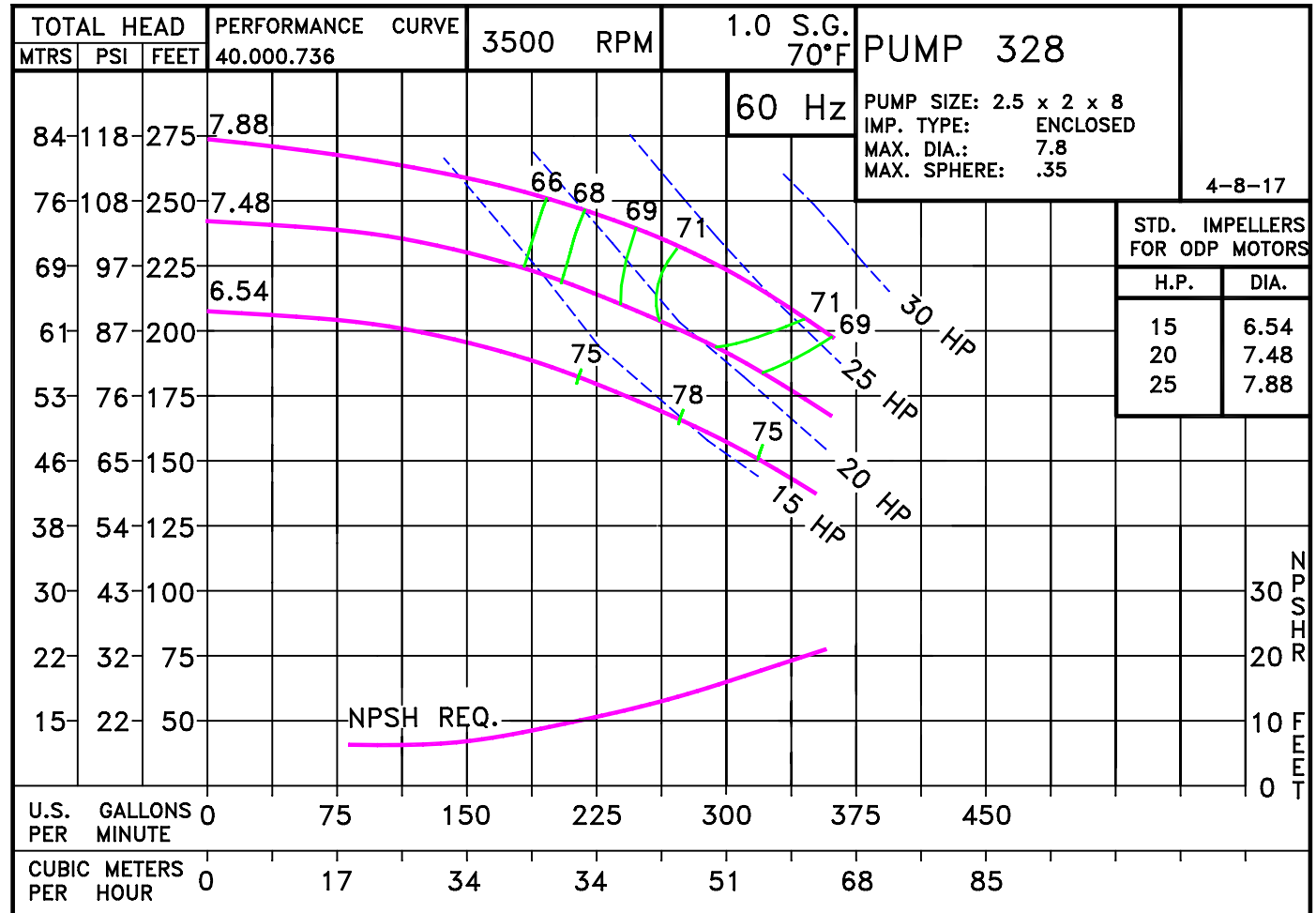
* 215JM Shaft



ALL DIMENSIONS IN INCHES.

DRAWING REPRESENTS APPROXIMATE PUMP DIMENSIONS. ATOCAD DRAWING TO SCALE AVAILABLE FROM FACTORY.

**PUMP TO BE
INSTALLED ONLY IN
THE HORIZONTAL
POSITION AS
SHOWN.**



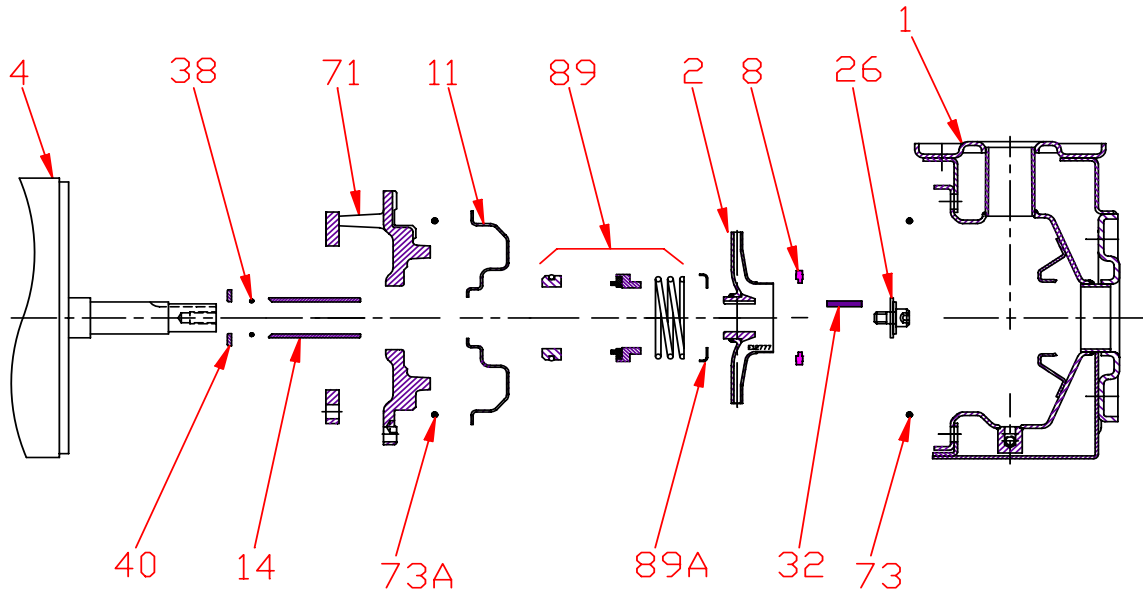
32820TE

D328JM21
3283500

328 JM

3283500JM
81.002.209 E17

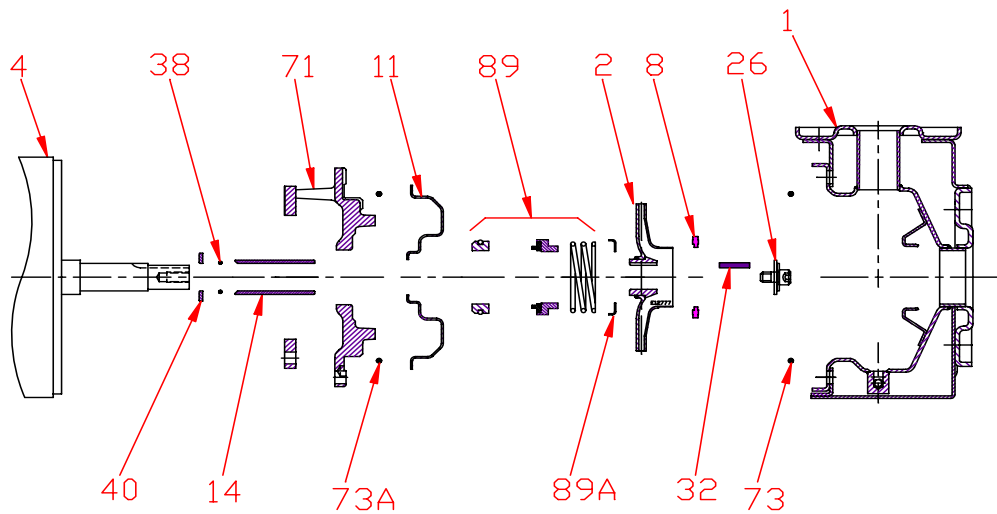
Pump 328 • 304SS • JM Frame • 3500 RPM



KEY NO.	PART NAME	PUMP 328
1	CASE, 304SS, 2.5 x 2, FLG	137.002.980
2	IMPELLER, STAINLESS, ENCLOSED, 7/8" KEYED:	
	6.54" DIA	137.002.976
	7.48" DIA	137.002.946
	7.88" DIA	137.002.947
4	MOTOR, JM210	See Chart
	MOTOR, TCZ250	See Chart
8	RING	137.002.931
11	COVER, 304SS	137.002.919
14*	SHAFT SLEEVE, 304SS	137.002.904
26*	IMPELLER RETAINER, 304SS	118.000.111A
32*	KEY, 303SS	102.000.102
38*	O-RING, SHAFT, BUNA	116.000.117
40*	FLINGER, 304SS	104.000.165
71	ADAPTER, IRON, JM210	137.002.926
73*	GASKET, CASE, BUNA	137.002.922
73A*	GASKET, COVER, BUNA	137.003.013
89*	1-1/4" SEALS	
	TYPE 21, BN-CARB/CM	137.002.949
	TYPE 21, VN-CARB/CM	137.002.950
	TYPE 21, VN-CARB/SIL	137.002.952
	TYPE 21, VN-SIL/SIL	137.002.953
	TYPE 21, EPDM-CARB/SIL	137.002.951
89A	SEAL RETAINER, STAINLESS	137.002.948
--	REPAIR KITS:	
	BN-CARB/CM SEAL	118.000.675
	VN-CARB/CM SEAL	118.000.675A
	VN-CARB/SIL SEAL	118.000.675D
	VN-SIL/SIL SEAL	118.000.675B
	EPDM-CARB/SIL SEAL	118.000.675C

* DENOTES COMPONENTS INCLUDED IN REPAIR KIT.

Pump 328 • 304SS • JM Frame • 3500 RPM



CONSTRUCTION OPTIONS		
KEY	PART NAME	STANDARD FITTED
1	Case	304SS
2	Impeller	304SS
8	Impeller Ring	POLYPHENYLENE OXIDE 20% GLASS
11	Cover	304SS
14	Sleeve	304SS
26	Retainer Assembly	304SS
32	Key	303SS
38	O-ring, Shaft	BUNA
40	Flinger	304SS
71	Motor Disc	Cast Iron
73	Gasket, Case	Buna
73A	Gasket, Cover	Buna
89	Seal Assembly	BN-CARB/CM
89A	Seal Retainer	304SS

E320JM

B18

C3283500JM