

MOTORPUMP™ — 1750 RPM 60 HERTZ, 2.50 X 2.00 FLG

328

JM

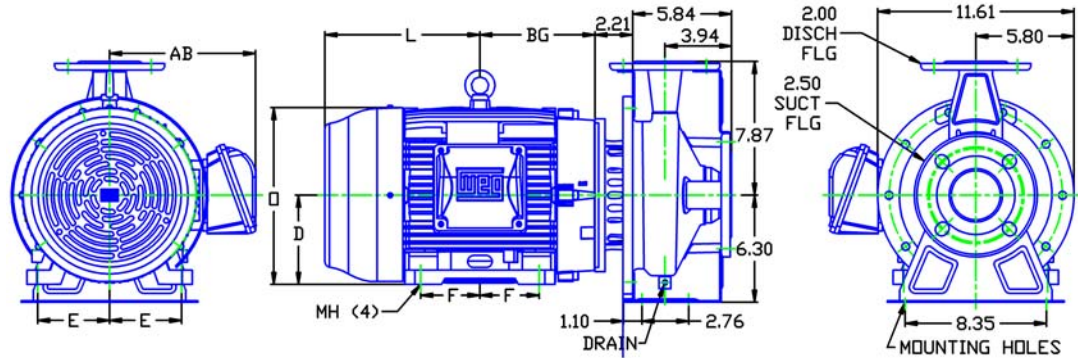
D328JM21

DRAWING DEPICTS 21JM 15HP TEFC MOTOR

MOTOR DIMENSIONS

NEMA PREMIUM EFFICIENT JM FRAME 3 PHASE 1750 RPM

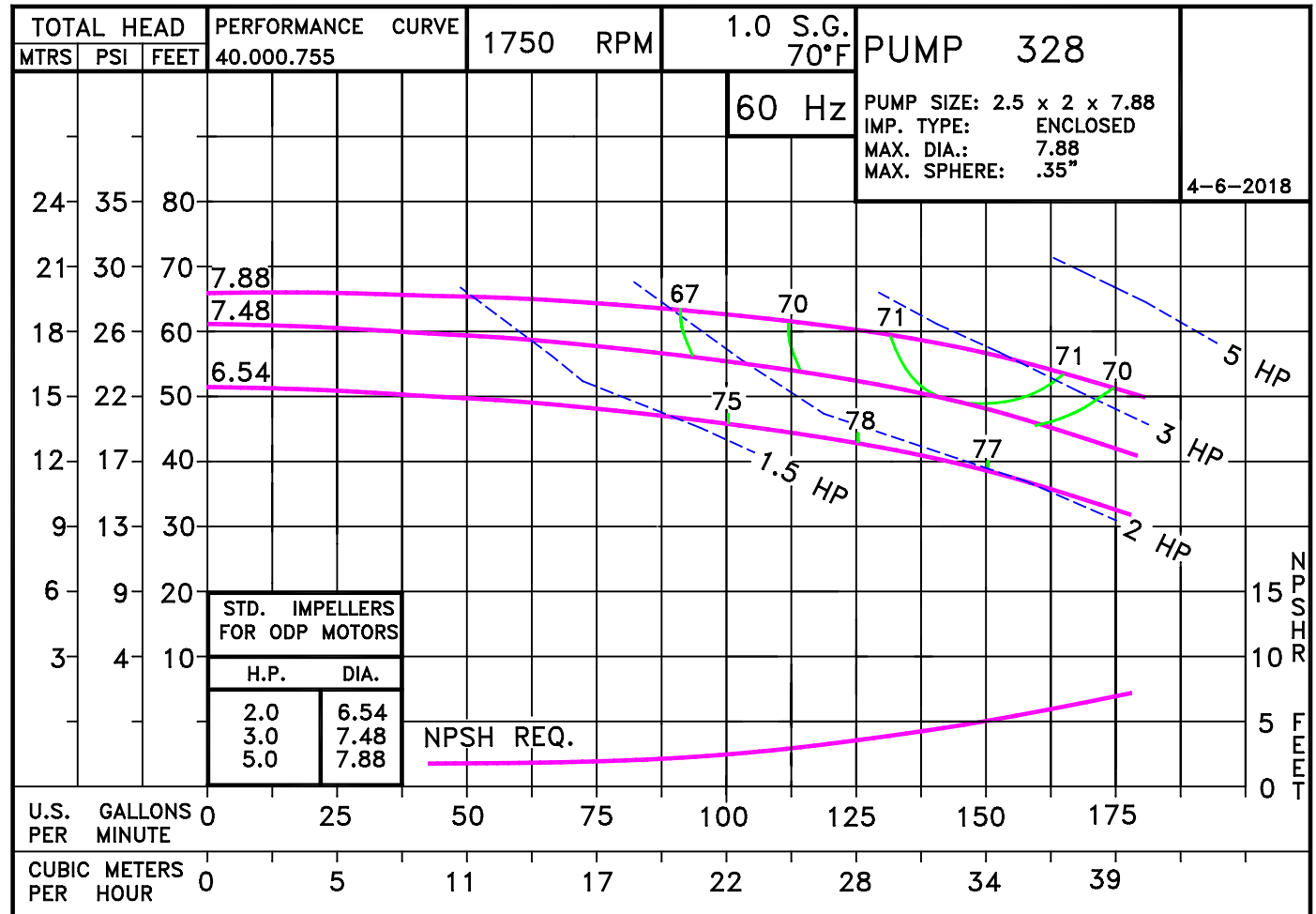
HP	Type	Frame	D	E	F	O	AB	BG	L	MH
2	ODP	JM145	3.50	2.75	2.50	6.77	5.12	5.38	4.12	0.34
3	ODP	JM182	4.50	3.75	2.25	7.81	5.12	5.75	6.25	0.41
5	ODP	JM184	4.50	3.75	2.75	8.44	5.85	6.25	6.00	0.41
2	TEFC	JM145	3.50	2.75	2.50	7.00	6.25	5.06	6.34	0.34
3	TEFC	JM182	4.50	3.75	2.25	8.85	7.57	5.01	7.14	0.41
5	TEFC	JM184	4.50	3.75	2.75	8.85	7.57	5.51	7.64	0.41



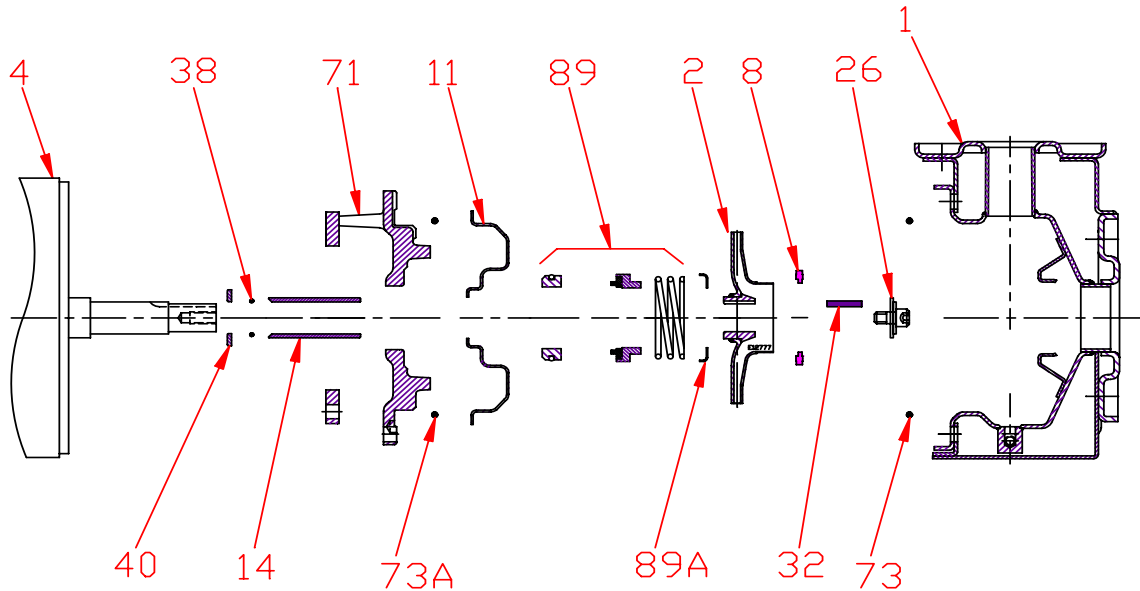
ALL DIMENSIONS IN INCHES.

DRAWING REPRESENTS APPROXIMATE PUMP DIMENSIONS. ATOCAD DRAWING TO SCALE AVAILABLE FROM FACTORY.

**PUMP TO BE
INSTALLED ONLY IN
THE HORIZONTAL
POSITION AS
SHOWN.**



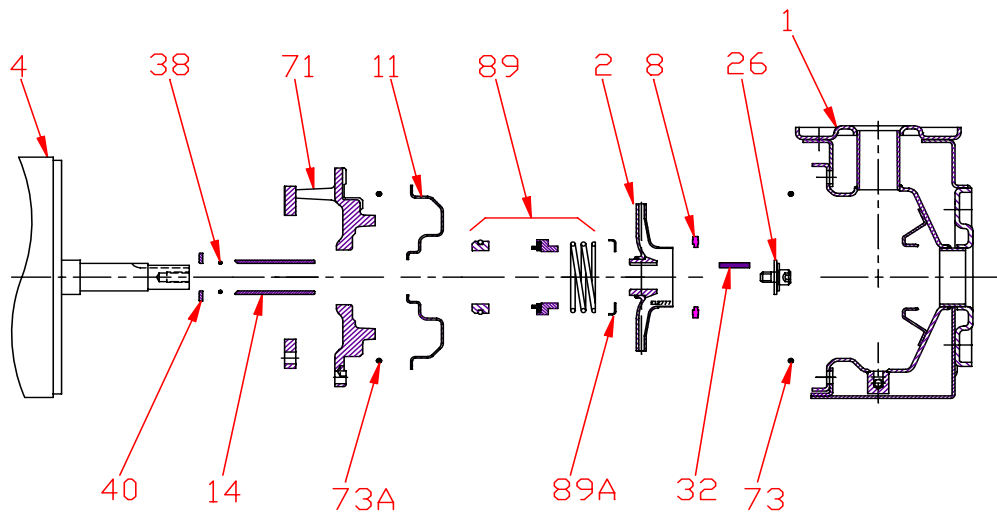
Pump 328 • 304SS • JM Frame • 1750 RPM



KEY NO.	PART NAME	PUMP 328
1	CASE, 304SS, 2.5 x 2, FLG	137.002.980
2	IMPELLER, STAINLESS, ENCLOSED, 7/8" KEYED:	
	6.54" DIA	137.002.976
	7.48" DIA	137.002.946
	7.88" DIA	137.002.947
4	MOTOR, JM140/180	See Chart
8	RING	137.002.931
11	COVER, 304SS	137.002.919
14*	SHAFT SLEEVE, 304SS	137.002.904
26*	IMPELLER RETAINER, 304SS	118.000.111A
32*	KEY, 303SS	102.000.102
38*	O-RING, SHAFT, BUNA	116.000.117
40*	FLINGER, 304SS	104.000.165
71	ADAPTER, IRON, JM140/180	137.002.918
73*	GASKET, CASE, BUNA	137.002.922
73A*	GASKET, COVER, BUNA	137.003.013
89*	1-1/4" SEALS	
	TYPE 21, BN-CARB/CM	137.002.949
	TYPE 21, VN-CARB/CM	137.002.950
	TYPE 21, VN-CARB/SIL	137.002.952
	TYPE 21, VN-SIL/SIL	137.002.953
	TYPE 21, EPDM-CARB/SIL	137.002.951
89A	SEAL RETAINER, STAINLESS	137.002.948
--	REPAIR KITS:	
	BN-CARB/CM SEAL	118.000.675
	VN-CARB/CM SEAL	118.000.675A
	VN-CARB/SIL SEAL	118.000.675D
	VN-SIL/SIL SEAL	118.000.675B
	EPDM-CARB/SIL SEAL	118.000.675C

* DENOTES COMPONENTS INCLUDED IN REPAIR KIT.

Pump 328 • 304SS • JM Frame • 1750 RPM



CONSTRUCTION OPTIONS		
KEY	PART NAME	STANDARD FITTED
1	Case	304SS
2	Impeller	304SS
8	Impeller Ring	POLYPHENYLENE OXIDE 20% GLASS
11	Cover	304SS
14	Sleeve	304SS
26	Retainer Assembly	304SS
32	Key	303SS
38	O-ring, Shaft	BUNA
40	Flinger	304SS
71	Motor Disc	Cast Iron
73	Gasket, Case	Buna
73A	Gasket, Cover	Buna
89	Seal Assembly	BN-CARB/CM
89A	Seal Retainer	304SS

E320JM

D18

C3281750JM