

SCOT ARDOX

MOTORPUMP™ — 3500 RPM 60 HERTZ 1.25 X .75 NPT

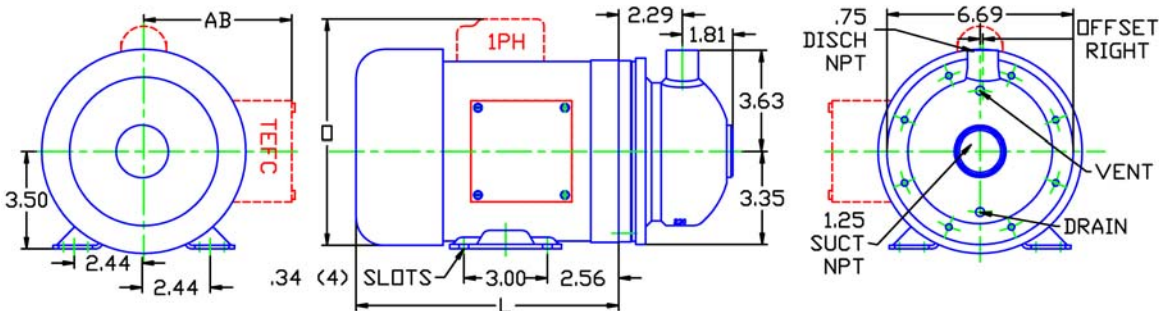
230 J56

D230J563500

DRAWING DEPICTS J56 1PHASE TEFC MOTOR

MOTOR DIMENSIONS NEMA J56 FRAME 3500 RPM

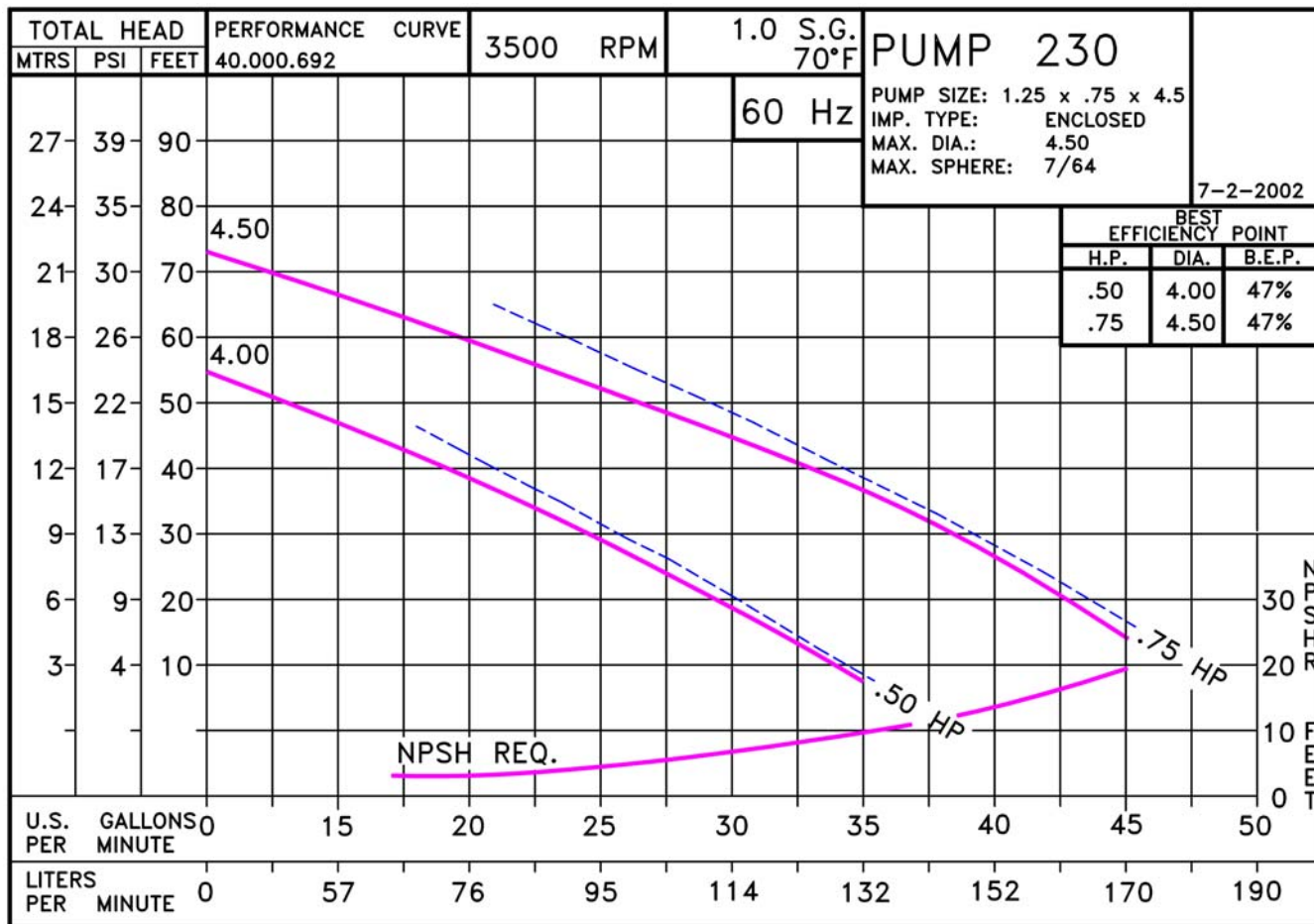
HP	FRAME	TYPE	3PH			1PH		
			L	O	AB	L	O	AB
.50	J56	ODP	8.26	6.46	3.32	9.06	8.37	3.25
.75	J56	ODP	8.26	6.46	3.32	9.56	8.37	3.25
.50	J56	TEFC	9.48	7.35	5.87	9.43	8.10	5.31
.75	J56	TEFC	9.48	7.35	5.87	9.43	8.10	5.31



ALL DIMENSIONS IN INCHES.

DRAWING REPRESENTS APPROXIMATE PUMP DIMENSIONS. AUTOCAD DRAWING TO SCALE AVAILABLE FROM FACTORY.

PUMP TO BE
INSTALLED ONLY IN
THE HORIZONTAL
POSITION AS
SHOWN.



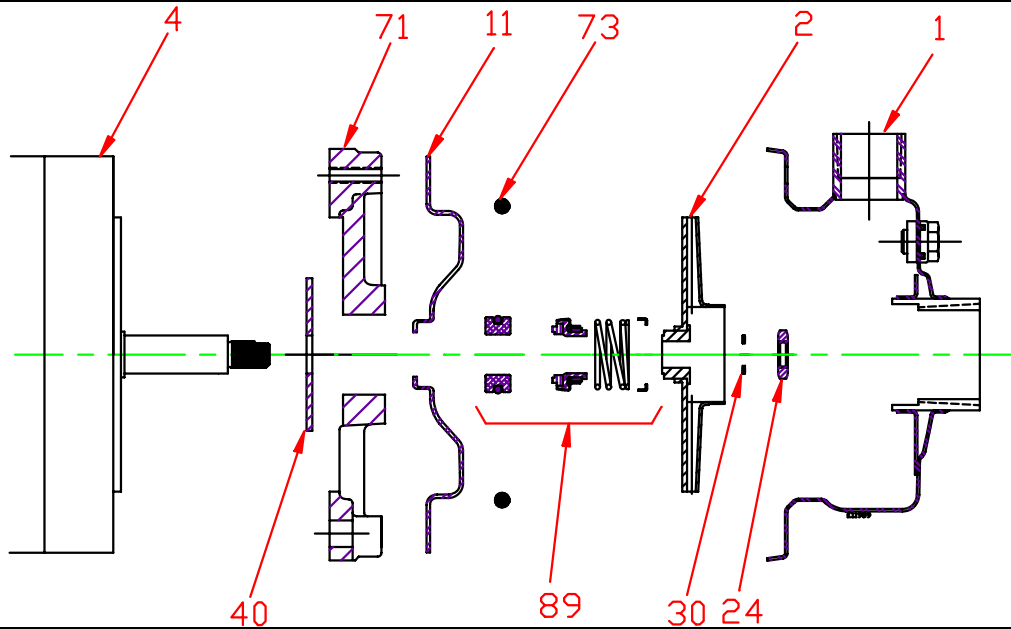
23005DP

D230J563500
2303500

230 J56

230J3500J56
81.001.836 K14

Pump 230 • 304SS • J56 Frame • 3500 RPM



KEY NO.	PART NAME	PUMP 230	
1	CASE, 304SS, 1.25 x .75, NPT	137.001.607	
2	IMPELLER, STAINLESS, ENCLOSED, 7/16" THREADED:		
	4.00" DIA	137.001.374	
	4.50" DIA	137.001.058	
4	MOTOR:		
	J56/56B, 3.5" RIGID BASE	See Chart	
11	COVER, STAINLESS	137.001.608	
24*	NUT, 304SS	137.001.349	
30*	D WASHER, 316SS	104.000.168	
40*	FLINGER, NEOPRENE	104.000.171	
71	DISC, IRON	137.001.609	
73*	GASKET, CASE, BUNA	137.001.610	
89*	5/8" SEALS WITH RETAINER:		
	TYPE 21, BN-CARB/SIL	137.002.401	
	TYPE 21, VN-CARB/SIL	137.002.390	
	TYPE 21, VN-SIL/SIL	137.002.406	
	TYPE 21, EPDM-CARB/SIL	137.002.258	
--	REPAIR KITS:	3 PHASE:	† 1 PHASE:
	BN-CARB/SIL SEAL	118.000.618	118.000.618.1
	VN-CARB/SIL SEAL	118.000.618D	118.000.618D.1
	VN-SIL/SIL SEAL	118.000.618E	118.000.618E.1
	EPDM-CARB/SIL SEAL	118.000.618C	118.000.618C.1

* DENOTES COMPONENTS INCLUDED IN REPAIR KIT.

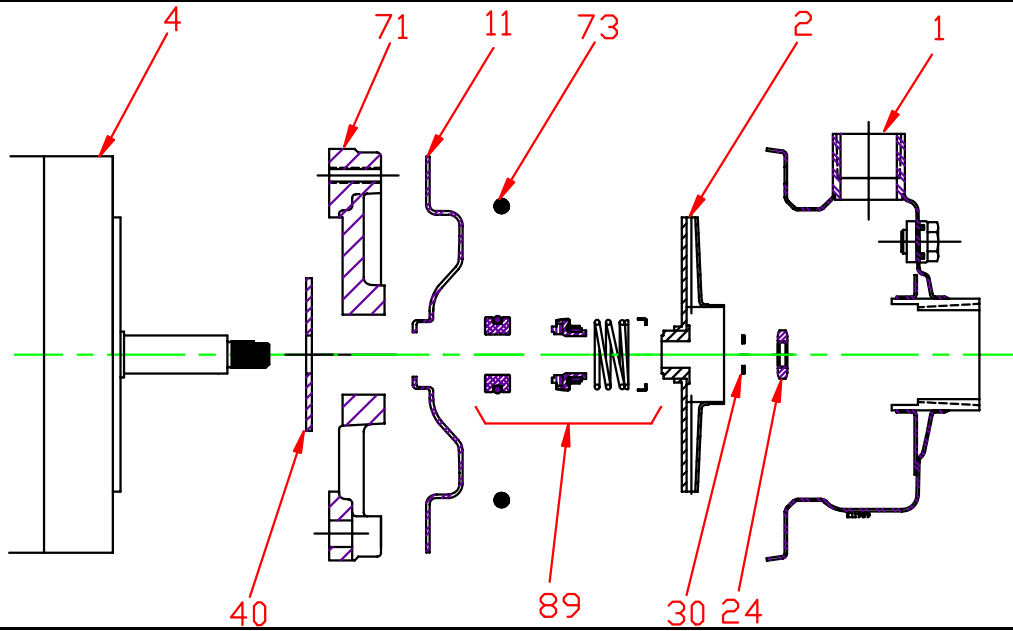
+ NOT REQUIRED ON 1 PHASE MOTORS.

E230J56

K11

P2303500J56

Pump 230 • 304SS • J56 Frame • 3500 RPM



CONSTRUCTION OPTIONS		
KEY	PART NAME	STANDARD FITTED
1	Case	304SS
2	Impeller	304SS
11	Cover	304SS
24	Nut	304SS
30	D-Washer	316SS
40	Flinger	Neoprene
71	Motor Disc	Cast Iron
73	Gasket, Case	Buna
89	Mechanical Seal, Type 21, BN-CARB/SIL	Standard
89A	Seal Retainer	304SS

E230J56

A15

C2303500J56