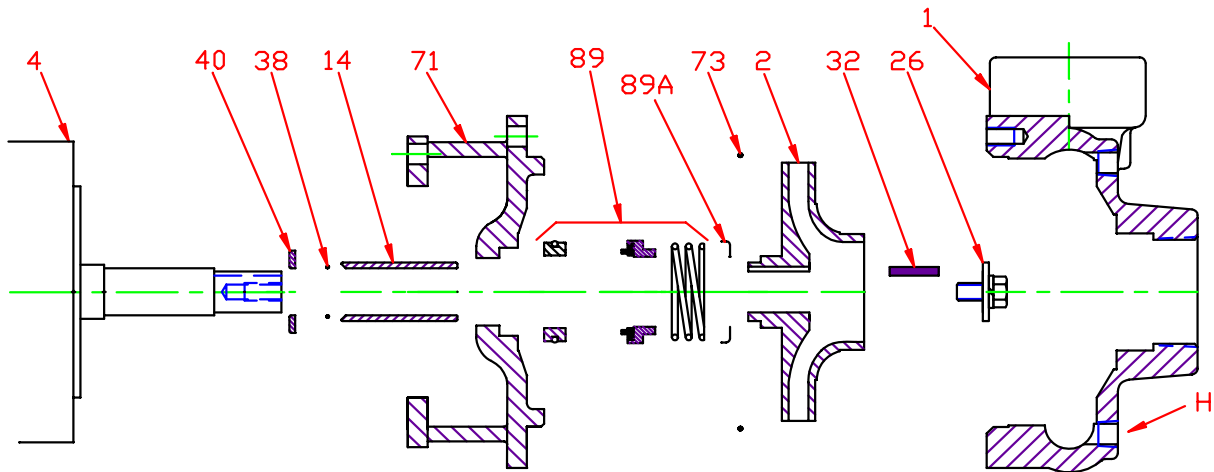


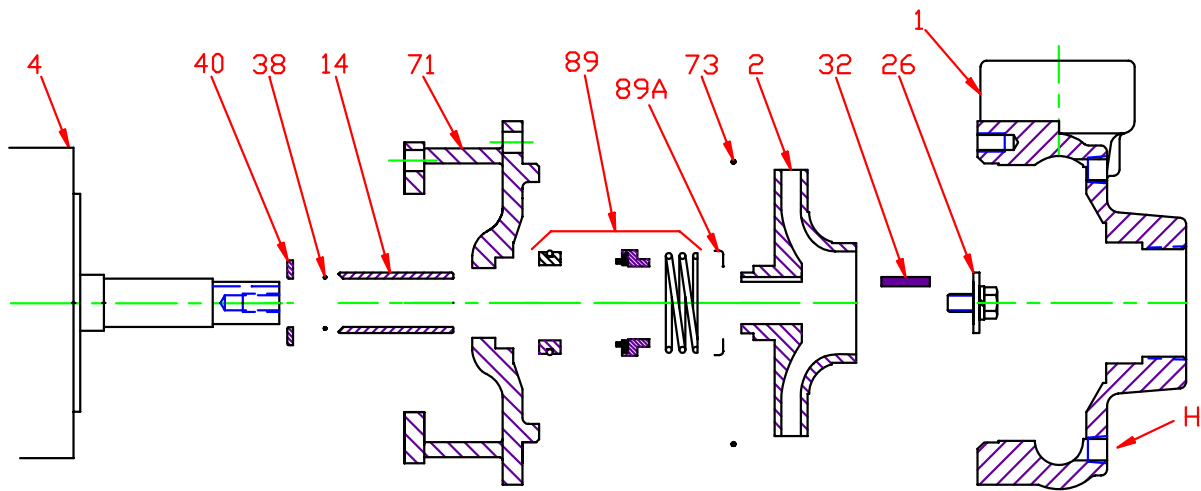
Pump 17 • Iron • JM Frame • 3500 RPM



KEY NO.	PART NAME	PUMP NO. 17
1	CASE, IRON, 2 x 2 NPT	130.000.168X
2	IMPELLER, 7/8" KEYED, ENCLOSED, SPECIFY DIAMETER:	
	CIBR	131.000.823
	IRON	137.000.128
	BRONZE	131.000.806
4	MOTOR, JM140/180	See Chart
14*	SHAFT SLEEVE, BRONZE	110.000.178
	SHAFT SLEEVE, STAINLESS	110.000.192
26*	IMPELLER RETAINER, STAINLESS	118.000.111A
32*	KEY, STAINLESS	102.000.102
38*	O-RING, SHAFT, BUNA	116.000.117
	O-RING, SHAFT, VITON	116.000.105
40*	FLINGER, STAINLESS	104.000.165
71	ADAPTER, IRON, JM140/180	132.000.194X
73*	GASKET, CASE, BUNA	116.000.146
89*	1½" SEALS:	
	BN-CARB/CM	101.000.168
	VN-CARB/CM	101.000.191
	VN-CARB/SIL	101.000.175
	VN-SIL/SIL	101.000.204
	EPDM-CARB/SIL	101.000.175B
	EPDM-SIL/SIL	101.000.204A
89A*	SEAL RETAINER	104.000.175
--	° REPAIR KITS:	
	BN-CARB/CM SEAL	118.000.343
	VN-CARB/CM SEAL (S)	118.000.343A
	VN-CARB/CM SEAL	118.000.343M
	VN-CARB/SIL SEAL	118.000.343B
	VN-SIL/SIL SEAL (S)	118.000.343F
	EPDM-CARB/SIL SEAL	118.000.343D
EPDM-SIL/SIL SEAL	118.000.343J	

* DENOTES COMPONENTS INCLUDED IN REPAIR KIT.
 ° ALL REPAIR KITS INCLUDE THE BRONZE SHAFT SLEEVE EXCEPT THE (S) INDICATED, WHICH IS STAINLESS WITH VITON SHAFT O-RING.

Pump 17 • Iron • JM Frame • 3500 RPM



CONSTRUCTION OPTIONS				
KEY	PART NAME	STANDARD FITTED	BRONZE FITTED	ALL IRON
1	Case	Iron	Iron	Iron
2	Impeller	CIBR	Bronze	Iron
14	Shaft Sleeve	Bronze	Bronze	Stainless
26	Imp. Retaining Ass'y	Stainless	Stainless	Stainless
32	Key	Stainless	Stainless	Stainless
38	Shaft O-Ring	BUNA	BUNA	BUNA
40	Flinger	Stainless	Stainless	Stainless
71	Adapter	Iron	Iron	Iron
73	Gasket, Case	BUNA	BUNA	BUNA
89	Mechanical Seal, Type 21 BN-CM	Standard	Standard	Standard
89A	Seal Retainer	Stainless	Stainless	Stainless
H	Plug, Drain	Brass	Brass	Plated Steel

CIBR: Cast iron with brass wear ring

E017JM

E11

C0173500JM